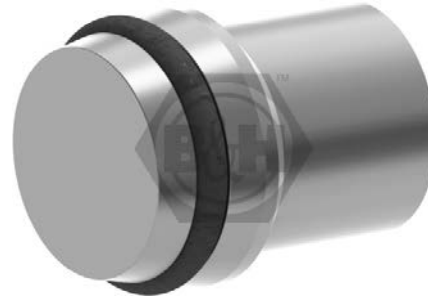
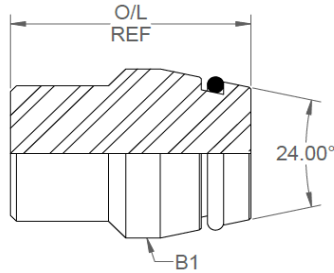


All dimensions in mm.



	B1	O/L
03-BP-06LOR	6L	19
03-BP-08LOR	8L	19
03-BP-10LOR	10L	21
03-BP-12LOR	12L	21
03-BP-15LOR	15L	21
03-BP-18LOR	18L	22
03-BP-22LOR	22L	23
03-BP-28LOR	28L	22
03-BP-35LOR	35L	25
03-BP-42LOR	42L	26

Add -CWON to part number for complete with nuts and rings, i.e. 03-BP-06LOR-CWON.

DESIGN DETAILS AND SPECIFICATIONS SUBJECT TO CHANGE WITHOUT PRIOR NOTICE - Whilst every effort has been made to ensure the accuracy of the information supplied herein, Burnett & Hillman cannot be held responsible for any errors or omissions (E&OE)