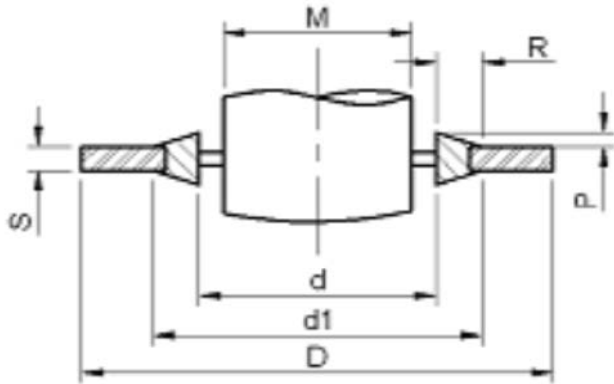


Thread Size	B&H	D	d	d1	S		R	P	Pressure Rating
M8	MBS-8	14.00	8.70	10.40	1.00	±0.12	0.85	0.3	748
1/8 BSP	BBS-2	15.88	10.37	11.84	2.00	±0.18	0.73	0.25/0.51	737
M10	MBS-10	16.00	10.70	12.40	1.50	±0.14	0.85	0.4	627
M12	MBS-12	19.00	12.70	14.10	1.50	±0.14	0.7	0.4	751
1/4 BSP	BBS-4	20.57	13.74	15.21	2.00	±0.18	0.73	0.25/0.51	761
M14	MBS-14	22.00	14.70	16.40	1.50	±0.14	0.85	0.4	738
M16	MBS-16	24.00	16.70	18.40	1.50	±0.14	0.85	0.4	657
3/8 BSP	BBS-6	23.80	17.28	18.75	2.00	±0.18	0.73	0.25/0.51	582
M18	MBS-18	26.00	18.70	20.40	1.50	±0.14	0.85	0.4	593
M20	MBS-20	28.00	20.70	22.50	1.50	±0.14	0.9	0.4	528
1/2 BSP	BBS-8	28.58	21.54	23.01	2.30	+0.35/-0.18	0.73	0.25/0.51	523
M22	MBS-22	30.00	22.70	24.40	2.00	±0.18	0.85	0.4	496
5/8 BSP	BBS-10	31.75	23.49	24.97	2.30	+0.35/-0.18	0.74	0.25/0.51	586
M24	MBS-24	32.00	24.70	26.40	2.00	±0.18	0.85	0.4	458
3/4 BSP	BBS-12	34.93	27.05	28.53	2.30	+0.35/-0.18	0.74	0.25/0.51	485
7/8 BSP	N/A	38.10	30.81	32.29	2.30	+0.35/-0.18	0.74	0.25/0.51	389
1 BSP	BBS-16	42.80	33.89	36.88	3.20	+0.20/-0.40	1.5	0.25/0.51	347
1 1/4 BSP	BBS-20	52.38	42.93	45.93	3.20	+0.20/-0.40	1.5	0.25/0.51	303
1 1/2 BSP	BBS-24	58.60	48.44	51.39	3.20	+0.20/-0.40	1.47	0.25/0.51	303
1 3/4 BSP	BBS-28	69.85	54.89	58.30	3.20	+0.20/-0.40	1.7	0.25/0.51	428
2 BSP	BBS-32	73.03	60.58	63.63	3.20	+0.20/-0.40	1.52	0.25/0.51	319
2 1/2 BSP	BBS-40	90.30	76.08	79.38	3.20	+0.20/-0.40	1.65	0.25/0.51	325

Pressure ratings are given for reference only. Relevant adaptor ratings should be used when determining working pressures.

SELF CENTRING BONDED SEALS NITRILE - MILD STEEL

Dec-21



DESIGN DETAILS AND SPECIFICATIONS SUBJECT TO CHANGE WITHOUT PRIOR NOTICE - Whilst every effort has been made to ensure the accuracy of the information supplied herein, Burnett & Hillman cannot be held responsible for any errors or omissions (E&OE). Working pressures quoted are taken from the relevant standard and are provided as a guide only.