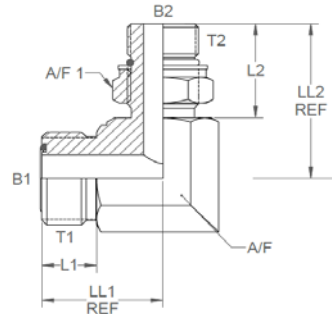


ORFS male x METRIC male 1.5mm pitch 90° positional forged elbow

Nov-21
0923 IMP

All dimensions are imperial unless stated.



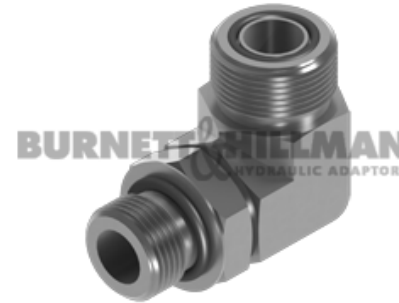
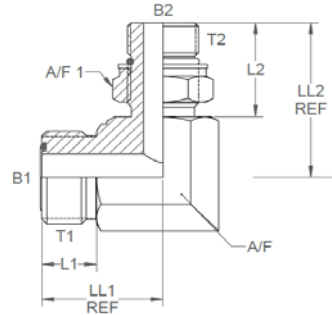
	T1	T2	B1	B2	L1	L2	LL1	LL2	A/F	A/F1
9515-04-M10	9/16	M10 x 1.0	0	0	0	0	0	0	0	0
9515-04-M12	9/16	M12 x 1.5	0.172	0.157	0.35	0.95	0.85	1.3	0.551	17mm
9515-04-M14	9/16	M14 x 1.5	0.172	0.236	0.35	0.95	0.85	1.398	0.669	19mm
9515-04-M16	9/16	M16 x 1.5	0.172	0.276	0.35	0.826	0.85	1.476	0.669	22mm
9515-04-M18	9/16	M18 x 1.5	0.172	0.354	0.35	1.141	0.925	1.614	0.748	24mm
9515-06-M16	11/16	M16 x 1.5	0.264	0.276	0.41	1.023	0.98	1.476	0.669	22mm
9515-06-M18	11/16	M18 x 1.5	0.264	0.354	0.41	1.141	0.98	1.614	0.748	24mm
9515-06-M20	11/16	M20 x 1.5	0	0	0	0	0	0	0	0
9515-06-M22	11/16	M22 x 1.5	0.264	0.472	0.41	1.2	0.98	1.929	0.945	27mm
9515-08-M12	13/16	M12 x 1.5	0	0	0	0	0	0	0	0
9515-08-M14	13/16	M14 x 1.5	0.378	0.236	0.47	0.95	1.102	1.417	0.748	19mm
9515-08-M16	13/16	M16 x 1.5	0.378	0.276	0.47	1.023	1.102	1.496	0.748	22mm
9515-08-M18	13/16	M18 x 1.5	0.378	0.354	0.47	1.141	1.102	1.614	0.748	24mm
9515-08-M20	13/16	M20 x 1.5	0.378	0.393	0.47	1.14	1.102	1.62	0.748	27mm
9515-08-M22	13/16	M22 x 1.5	0.378	0.472	0.47	1.2	1.24	1.929	0.945	27mm
9515-10-M16	1	M16 x 1.5	0.484	0.276	0.55	1.203	1.32	1.8	0.945	22mm
9515-10-M18	1	M18 x 1.5	0.484	0.354	0.55	1.141	1.32	1.87	0.945	24mm
9515-10-M20	1	M20 x 1.5	0.484	0.393	0.55	1.14	1.32	1.92	0.945	27mm
9515-10-M22	1	M22 x 1.5	0.484	0.472	0.55	1.2	1.32	1.929	1.063	27mm
9515-12-M16	1-3/16	M16 x 1.5	0.609	0.276	0.59	1.023	1.476	1.78	1.188	22mm

DESIGN DETAILS AND SPECIFICATIONS SUBJECT TO CHANGE WITHOUT PRIOR NOTICE - Whilst every effort has been made to ensure the accuracy of the information supplied herein, Burnett & Hillman cannot be held responsible for any errors or omissions (E&OE)

ORFS male x METRIC male 1.5mm pitch
90° positional forged elbow

Nov-21
0923 IMP

All dimensions are imperial unless stated.

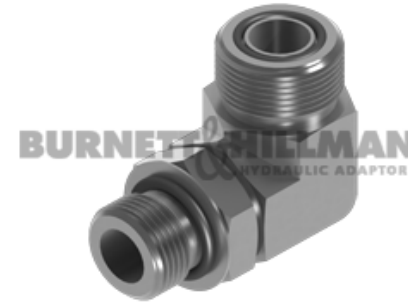
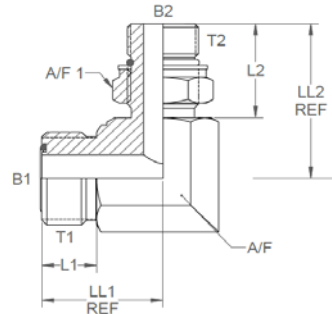


	T1	T2	B1	B2	L1	L2	LL1	LL2	A/F	A/F1
9515-12-M18	1-3/16	M18 x 1.5	0.609	0.354	0.59	1.141	1.476	1.78	1.188	24mm
9515-12-M20	1-3/16	M20 x 1.5	0	0	0	0	0	0	0	0
9515-12-M22	1-3/16	M22 x 1.5	0.609	0.472	0.59	1.2	1.476	1.929	1.188	27mm
9515-12-M24	1-3/16	M24 x 1.5	0.609	0.54	0.59	1.3	1.476	2.09	1.188	30mm
9515-12-M26	1-3/16	M26 x 1.5	0	0	0	0	0	0	0	0

ORFS male x METRIC male 1.5mm pitch 90° positional forged elbow

Nov-21
0923 METRIC

A/F dimensions are imperial unless stated.



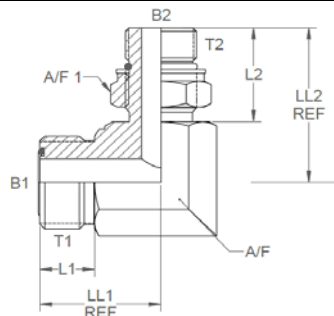
	T1	T2	B1	B2	L1	L2	LL1	LL2	A/F	A/F1
9515-04-M10	9/16	M10 x 1.0	0	0	0	0	0	0	0	0
9515-04-M12	9/16	M12 x 1.5	4.37	3.99	8.89	24.13	21.59	33.02	0.551	17mm
9515-04-M14	9/16	M14 x 1.5	4.37	5.99	8.89	24.13	21.59	35.51	0.669	19mm
9515-04-M16	9/16	M16 x 1.5	4.37	7.01	8.89	20.98	21.59	37.49	0.669	22mm
9515-04-M18	9/16	M18 x 1.5	4.37	8.99	8.89	28.98	23.5	41	0.748	24mm
9515-06-M16	11/16	M16 x 1.5	6.71	7.01	10.41	25.98	24.89	37.49	0.669	22mm
9515-06-M18	11/16	M18 x 1.5	6.71	8.99	10.41	28.98	24.89	41	0.748	24mm
9515-06-M20	11/16	M20 x 1.5	0	0	0	0	0	0	0	0
9515-06-M22	11/16	M22 x 1.5	6.71	11.99	10.41	30.48	24.89	49	0.945	27mm
9515-08-M12	13/16	M12 x 1.5	0	0	0	0	0	0	0	0
9515-08-M14	13/16	M14 x 1.5	9.6	5.99	11.94	24.13	27.99	35.99	0.748	19mm
9515-08-M16	13/16	M16 x 1.5	9.6	7.01	11.94	25.98	27.99	38	0.748	22mm
9515-08-M18	13/16	M18 x 1.5	9.6	8.99	11.94	28.98	27.99	41	0.748	24mm
9515-08-M20	13/16	M20 x 1.5	9.6	9.98	11.94	28.96	27.99	41.15	0.748	27mm
9515-08-M22	13/16	M22 x 1.5	9.6	11.99	11.94	30.48	31.5	49	0.945	27mm
9515-10-M16	1	M16 x 1.5	12.29	7.01	13.97	30.56	33.53	45.72	0.945	22mm
9515-10-M18	1	M18 x 1.5	12.29	8.99	13.97	28.98	33.53	47.5	0.945	24mm
9515-10-M20	1	M20 x 1.5	12.29	9.98	13.97	28.96	33.53	48.77	0.945	27mm
9515-10-M22	1	M22 x 1.5	12.29	11.99	13.97	30.48	33.53	49	1.063	27mm
9515-12-M16	1-3/16	M16 x 1.5	15.47	7.01	14.99	25.98	37.49	45.21	1.188	22mm

DESIGN DETAILS AND SPECIFICATIONS SUBJECT TO CHANGE WITHOUT PRIOR NOTICE - Whilst every effort has been made to ensure the accuracy of the information supplied herein, Burnett & Hillman cannot be held responsible for any errors or omissions (E&OE)

ORFS male x METRIC male 1.5mm pitch
90° positional forged elbow

Nov-21
0923 METRIC

A/F dimensions are imperial unless stated.



	T1	T2	B1	B2	L1	L2	LL1	LL2	A/F	A/F1
9515-12-M18	1-3/16	M18 x 1.5	15.47	8.99	14.99	28.98	37.49	45.21	1.188	24mm
9515-12-M20	1-3/16	M20 x 1.5	0	0	0	0	0	0	0	0
9515-12-M22	1-3/16	M22 x 1.5	15.47	11.99	14.99	30.48	37.49	49	1.188	27mm
9515-12-M24	1-3/16	M24 x 1.5	15.47	13.72	14.99	33.02	37.49	53.09	1.188	30mm
9515-12-M26	1-3/16	M26 x 1.5	0	0	0	0	0	0	0	0