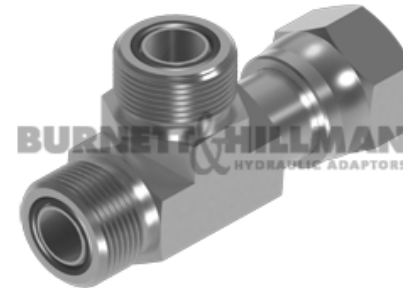
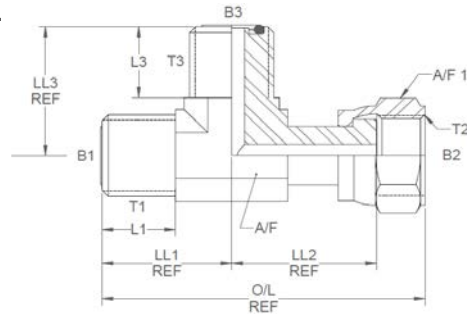
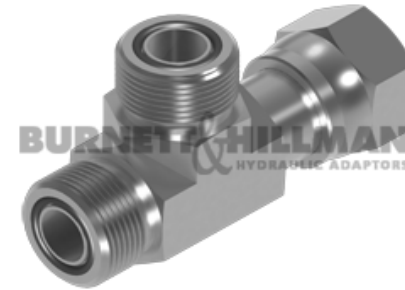
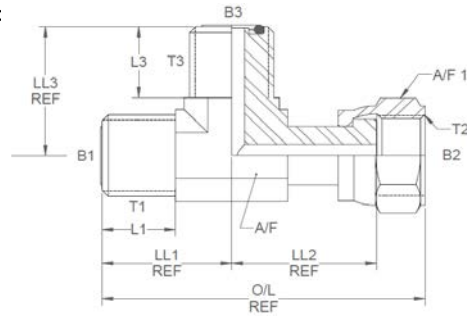


All dimensions are imperial unless stated.



	T1	T2	T3	B1	B2	B3	L1	L3	LL1	LL2	LL3	O/L	A/F	A/F1
9706-04-04-04	9/16	9/16	9/16	0.165	0.165	0.172	0.35	0.35	0.85	1.04	0.85	2.25	0.562	0.687
9706-06-06-06	11/16	11/16	11/16	0.264	0.264	0.264	0.41	0.41	0.98	1.15	0.98	2.54	0.75	0.812
9706-08-08-08	13/16	13/16	13/16	0.378	0.358	0.378	0.47	0.47	1.1	1.49	1.1	3	0.75	0.938
9706-10-10-10	1	1	1	0.484	0.453	0.484	0.55	0.55	1.31	1.62	1.31	3.49	1.062	1.125
9706-12-12-12	1-3/16	1-3/16	1-3/16	0.609	0.547	0.609	0.59	0.59	1.47	1.82	1.47	3.9	1.188	1.375
9706-16-16-16	1-7/16	1-7/16	1.7/16	0.811	0.783	0.811	0.61	0.61	1.64	2.1	1.64	4.31	1.438	1.625
9706-20-20-20	1-11/16	1-11/16	1-11/16	1.024	1.024	1.024	0.61	0.61	1.76	2.29	1.76	4.66	1.625	1.875
9706-24-24-24	2	2	2	1.26	1.26	1.26	0.61	0.61	1.92	2.41	1.92	4.85	1.875	2.25

A/F dimensions are imperial unless stated



	T1	T2	T3	B1	B2	B3	L1	L3	LL1	LL2	LL3	O/L	A/F	A/F1
9706-04-04-04	9/16	9/16	9/16	4.19	4.19	4.37	8.89	8.89	21.59	26.42	21.59	57.15	0.562	0.687
9706-06-06-06	11/16	11/16	11/16	6.71	6.71	6.71	10.41	10.41	24.89	29.21	24.89	64.52	0.75	0.812
9706-08-08-08	13/16	13/16	13/16	9.6	9.09	9.6	11.94	11.94	27.94	37.85	27.94	76.2	0.75	0.938
9706-10-10-10	1	1	1	12.29	11.51	12.29	13.97	13.97	33.27	41.15	33.27	88.65	1.062	1.125
9706-12-12-12	1-3/16	1-3/16	1-3/16	15.47	13.89	15.47	14.99	14.99	37.34	46.23	37.34	99.06	1.188	1.375
9706-16-16-16	1-7/16	1-7/16	1.7/16	20.6	19.89	20.6	15.49	15.49	41.66	53.34	41.66	109.47	1.438	1.625
9706-20-20-20	1-11/16	1-11/16	1-11/16	26.01	26.01	26.01	15.49	15.49	44.7	58.17	44.7	118.36	1.625	1.875
9706-24-24-24	2	2	2	32	32	32	15.49	15.49	48.77	61.21	48.77	123.19	1.875	2.25