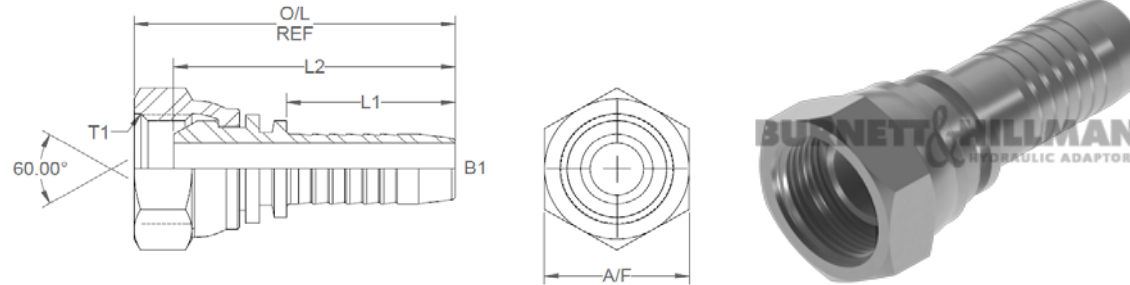
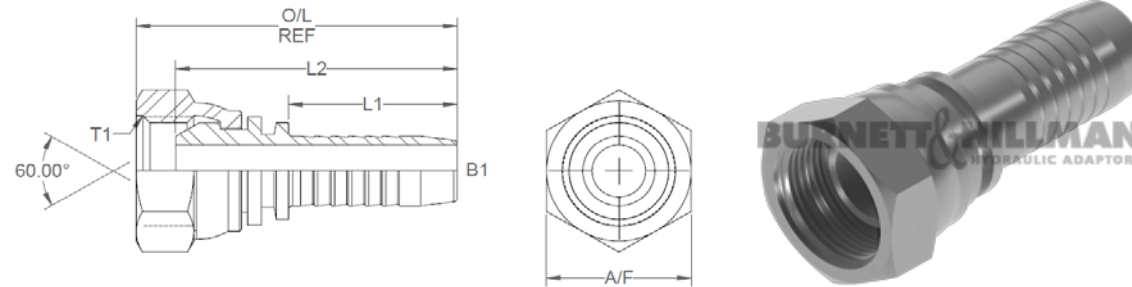


All dimensions are imperial unless stated.



	T1	T2	B1	L1	L2	O/L	A/F
93100	1/4	1/4 HT	0.172	1.105	1.782	1.997	19mm
93101	3/8	3/8 HT	0.271	1.18	1.972	2.225	22mm
93102	1/2	1/2 HT	0.375	1.24	2.068	2.35	27mm
93103	5/8	5/8 HT	0	0	0	0	0
93104	3/4	3/4 HT	0.6	1.555	2.4	2.79	32mm
93105	1	1 HT	0.797	1.85	2.758	3.195	41mm
93106	1-1/4	1-1/4 HT	1.014	2.158	3.153	3.588	50mm
93107	1-1/2	1-1/2 HT	1.312	2.283	3.458	3.93	55mm
93108	2	2 HT	1.703	2.873	4.09	4.757	70mm

A/F dimensions are imperial unless stated.



	T1	T2	B1	L1	L2	O/L	A/F
93100	1/4	1/4 HT	4.37	28.07	45.26	50.72	19mm
93101	3/8	3/8 HT	6.88	29.97	50.09	56.52	22mm
93102	1/2	1/2 HT	9.53	31.5	52.53	59.69	27mm
93103	5/8	5/8 HT	0	0	0	0	0
93104	3/4	3/4 HT	15.24	39.5	60.96	70.87	32mm
93105	1	1 HT	20.24	46.99	70.05	81.15	41mm
93106	1-1/4	1-1/4 HT	25.76	54.81	80.09	91.14	50mm
93107	1-1/2	1-1/2 HT	33.32	57.99	87.83	99.82	55mm
93108	2	2 HT	43.26	72.97	103.89	120.83	70mm