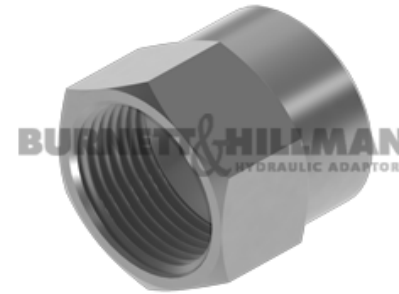
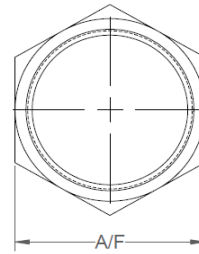
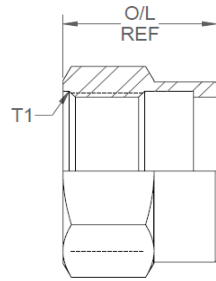
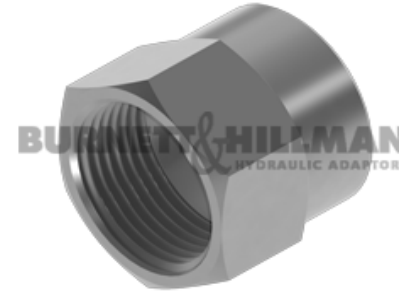
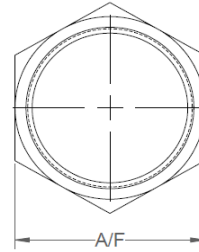
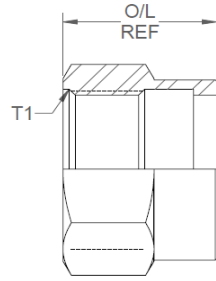


All dimensions are imperial unless stated.



	T1	O/L	A/F
08075	7/16	0.627	0.562
08076	1/2	0.625	0.625
08077	9/16	0.718	0.687
08078	3/4	0.834	0.875
08079	7/8	0.953	1
08080	1-1/16	1.051	1.25
08084	1-3/16	1.076	1.375
08081	1/5/16	1.137	1.5
08083	1-5/8	1.183	50mm
08082	1-7/8	1.355	55mm
08085	2-1/2	1.69	70mm

A/F dimensions are imperial unless stated.



	T1	O/L	A/F
08075	7/16	15.93	0.562
08076	1/2	15.88	0.625
08077	9/16	18.24	0.687
08078	3/4	21.18	0.875
08079	7/8	24.21	1
08080	1-1/16	26.7	1.25
08084	1-3/16	27.33	1.375
08081	1/5/16	28.88	1.5
08083	1-5/8	30.05	50mm
08082	1-7/8	34.42	55mm
08085	2-1/2	42.93	70mm