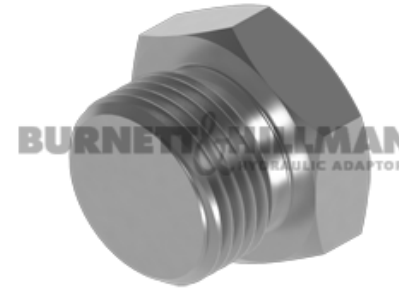
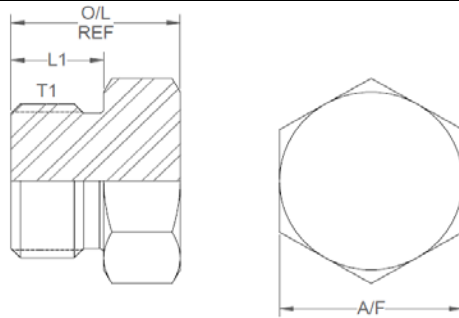
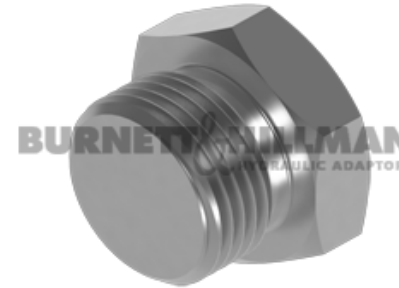
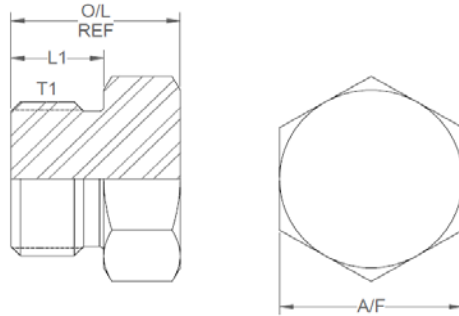


All dimensions are imperial unless stated.



	T1	L1	O/L	A/F
09162	5/16	0.297	0.577	0.437
09149	3/8	0.295	0.605	0.5
09150	7/16	0.36	0.67	0.562
09151	1/2	0.36	0.67	0.625
09152	9/16	0.391	0.73	0.687
09161	5/8	0.4	0.71	0.812
09153	3/4	0.438	0.8	22mm
09154	7/8	0.5	0.84	1
09155	1-1/16	0.594	1.09	1.25
09156	1-3/16	0.594	1.09	1.375
09157	1-5/16	0.594	1.12	1.5
09158	1-5/8	0.594	1.2	50mm
09159	1-7/8	0.594	1.27	55mm
09160	2-1/2	0.594	1.43	70mm

A/F dimensions are imperial unless stated.



	T1	L1	O/L	A/F
09162	5/16	7.54	14.66	0.437
09149	3/8	7.49	15.37	0.5
09150	7/16	9.14	17.02	0.562
09151	1/2	9.14	17.02	0.625
09152	9/16	9.93	18.54	0.687
09161	5/8	10.16	18.03	0.812
09153	3/4	11.13	20.32	22mm
09154	7/8	12.7	21.34	1
09155	1-1/16	15.09	27.69	1.25
09156	1-3/16	15.09	27.69	1.375
09157	1-5/16	15.09	28.45	1.5
09158	1-5/8	15.09	30.48	50mm
09159	1-7/8	15.09	32.26	55mm
09160	2-1/2	15.09	36.32	70mm