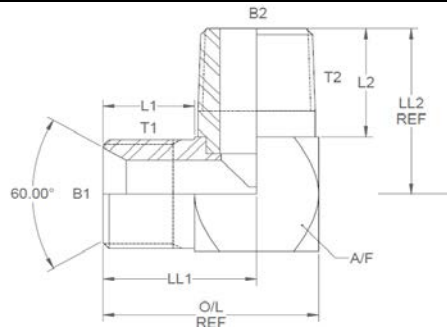


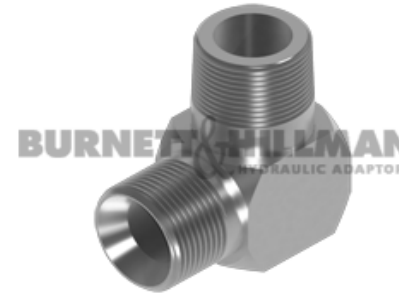
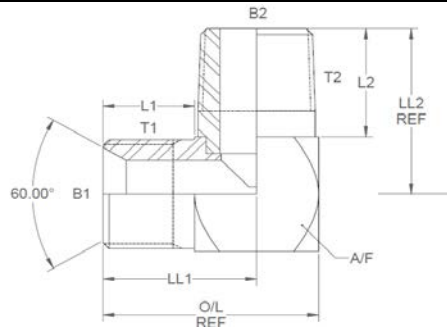
All dimensions are imperial unless stated.



	T1	T2	B1	B2	L1	L2	O/L	LL1	LL2	A/F
03069	1/8	1/8	0.156	0.187	0.5	0.52	1.01	0.755	0.77	0.5
03073	1/4	1/8	0.185	0.187	0.565	0.52	1.335	0.993	0.832	0.625
03070	1/4	1/4	0.185	0.25	0.565	0.68	1.335	0.95	0.992	0.625
03079	3/8	1/4	0.375	0.25	0.69	0.68	1.435	1.078	1.055	0.75
03080	3/8	1/4	0.312	0.25	0.6	0.68	1.52	1.135	1.055	0.75
03071	3/8	3/8	0.312	0.375	0.6	0.705	1.52	1.06	1.08	0.75
03081	3/8	1/2	0	0	0	0	0	0	0	0
03077	1/2	3/8	0.437	0.375	0.74	0.705	1.84	1.38	1.142	0.875
03072	1/2	1/2	0.437	0.5	0.74	0.94	1.84	1.329	1.377	0.875
03074-08B	3/4	1/2	0.687	0.5	0.97	0.885	2.21	1.59	1.447	1.125
03074	3/4	3/4	0.625	0.687	0.82	0.96	2.06	1.44	1.522	1.125
03078	1	3/4	0.875	0.625	1.25	0.96	2.75	2	1.647	1.375
03067	1	3/4	0.812	0.687	1.05	0.96	2.475	1.762	1.647	1.375
03075	1	1	0.812	0.843	1.05	1.3	2.475	1.762	1.987	1.375
03082	1-1/4	1-1/4	1.125	1.203	1.2	1.63	3.2	2.2	2.505	1.75
03068	1-1/2	1-1/2	1.312	1.312	1.6	1.415	3.65	2.625	2.415	2
03076	2	2	1.75	1.75	1.5	1.72	4.25	2.875	2.97	2.5

DESIGN DETAILS AND SPECIFICATIONS SUBJECT TO CHANGE WITHOUT PRIOR NOTICE - Whilst every effort has been made to ensure the accuracy of the information supplied herein, Burnett & Hillman cannot be held responsible for any errors or omissions (E&OE)

A/F dimensions are imperial unless stated.



	T1	T2	B1	B2	L1	L2	O/L	LL1	LL2	A/F
03069	1/8	1/8	3.96	4.75	12.7	13.21	25.65	19.18	19.56	0.5
03073	1/4	1/8	4.7	4.75	14.35	13.21	33.91	25.22	21.13	0.625
03070	1/4	1/4	4.7	6.35	14.35	17.27	33.91	24.13	25.2	0.625
03079	3/8	1/4	9.53	6.35	17.53	17.27	36.45	27.38	26.8	0.75
03080	3/8	1/4	7.92	6.35	15.24	17.27	38.61	28.83	26.8	0.75
03071	3/8	3/8	7.92	9.53	15.24	17.91	38.61	26.92	27.43	0.75
03081	3/8	1/2	0	0	0	0	0	0	0	0
03077	1/2	3/8	11.1	9.53	18.8	17.91	46.74	35.05	29.01	0.875
03072	1/2	1/2	11.1	12.7	18.8	23.88	46.74	33.76	34.98	0.875
03074-08B	3/4	1/2	17.45	12.7	24.64	22.48	56.13	40.39	36.75	1.125
03074	3/4	3/4	15.88	17.45	20.83	24.38	52.32	36.58	38.66	1.125
03078	1	3/4	22.23	15.88	31.75	24.38	69.85	50.8	41.83	1.375
03067	1	3/4	20.62	17.45	26.67	24.38	62.87	44.75	41.83	1.375
03075	1	1	20.62	21.41	26.67	33.02	62.87	44.75	50.47	1.375
03082	1-1/4	1-1/4	28.58	30.56	30.48	41.4	81.28	55.88	63.63	1.75
03068	1-1/2	1-1/2	33.32	33.32	40.64	35.94	92.71	66.68	61.34	2
03076	2	2	44.45	44.45	38.1	43.69	107.95	73.03	75.44	2.5

DESIGN DETAILS AND SPECIFICATIONS SUBJECT TO CHANGE WITHOUT PRIOR NOTICE - Whilst every effort has been made to ensure the accuracy of the information supplied herein, Burnett & Hillman cannot be held responsible for any errors or omissions (E&OE)