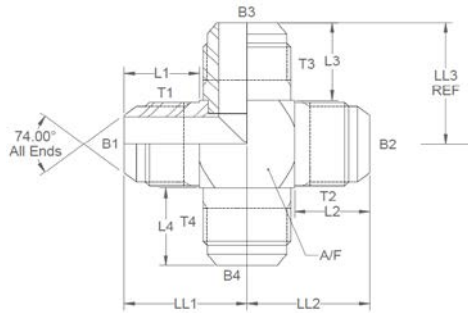


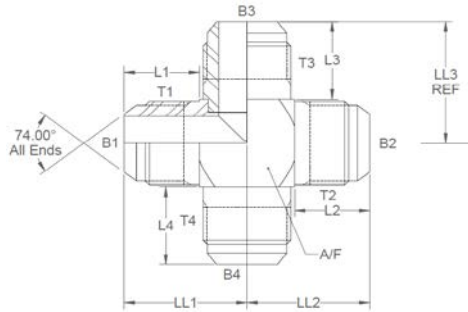
All dimensions are imperial
 unless stated.



	T1	T2	T3	T4	B1	B2	B3	B4	L1	L2	L3	L4	LL1	LL2	LL3	A/F
03030	7/16	7/16	7/16	7/16	0.172	0.172	0.172	0.172	0.64	0.64	0.64	0.64	0.902	0.905	0.89	0.5
03031	1/2	1/2	1/2	1/2	0.234	0.234	0.234	0.234	0.64	0.64	0.66	0.66	0.965	0.965	0.972	0.625
03032	9/16	9/16	9/16	9/16	0.297	0.297	0.297	0.297	0.65	0.65	0.7	0.7	1.037	1.037	1.012	0.625
03033	3/4	3/4	3/4	3/4	0.391	0.391	0.391	0.391	0.8	0.8	0.85	0.85	1.262	1.262	1.287	0.875
03034	7/8	7/8	7/8	7/8	0.484	0.484	0.484	0.484	0.875	0.875	0.95	0.95	1.437	1.437	1.512	1
03036	1-1/16	1-1/16	1-1/16	1-1/16	0.609	0.609	0.609	0.609	1.02	1.02	1.02	1.02	1.65	1.65	1.65	26.5
03035	1-5/16	1-5/16	1-5/16	1-5/16	0.844	0.844	0.844	0.844	1.125	1.125	1.22	1.22	1.837	1.837	1.907	1.375
03037	1-5/8	1-5/8	1-5/8	1-5/8	1.078	1.078	1.078	1.078	1.175	1.175	1.23	1.23	2.075	2.075	2.105	1.75

DESIGN DETAILS AND SPECIFICATIONS SUBJECT TO CHANGE WITHOUT PRIOR NOTICE - Whilst every effort has been made to ensure the accuracy of the information supplied herein, Burnett & Hillman cannot be held responsible for any errors or omissions (E&OE)

A/F dimensions are imperial
 unless stated.



	T1	T2	T3	T4	B1	B2	B3	B4	L1	L2	L3	L4	LL1	LL2	LL3	A/F
03030	7/16	7/16	7/16	7/16	4.37	4.37	4.37	4.37	16.26	16.26	16.26	16.26	22.91	22.99	22.61	0.5
03031	1/2	1/2	1/2	1/2	5.94	5.94	5.94	5.94	16.26	16.26	16.76	16.76	24.51	24.51	24.69	0.625
03032	9/16	9/16	9/16	9/16	7.54	7.54	7.54	7.54	16.51	16.51	17.78	17.78	26.34	26.34	25.7	0.625
03033	3/4	3/4	3/4	3/4	9.93	9.93	9.93	9.93	20.32	20.32	21.59	21.59	32.05	32.05	32.69	0.875
03034	7/8	7/8	7/8	7/8	12.29	12.29	12.29	12.29	22.23	22.23	24.13	24.13	36.5	36.5	38.4	1
03036	1-1/16	1-1/16	1-1/16	1-1/16	15.47	15.47	15.47	15.47	25.91	25.91	25.91	25.91	41.91	41.91	41.91	26.5
03035	1-5/16	1-5/16	1-5/16	1-5/16	21.44	21.44	21.44	21.44	28.58	28.58	30.99	30.99	46.66	46.66	48.44	1.375
03037	1-5/8	1-5/8	1-5/8	1-5/8	27.38	27.38	27.38	27.38	29.85	29.85	31.24	31.24	52.71	52.71	53.47	1.75