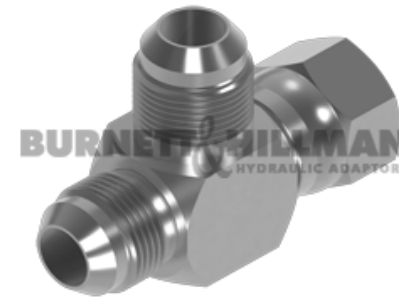
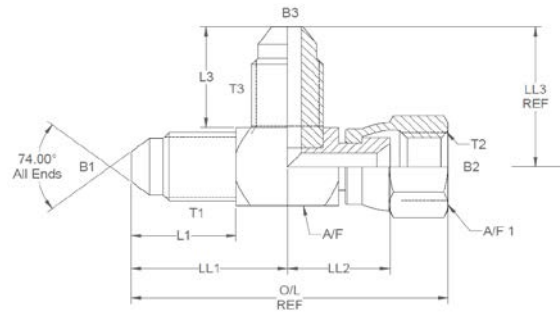


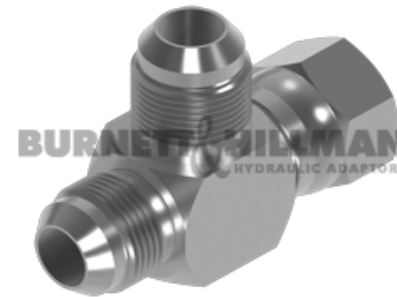
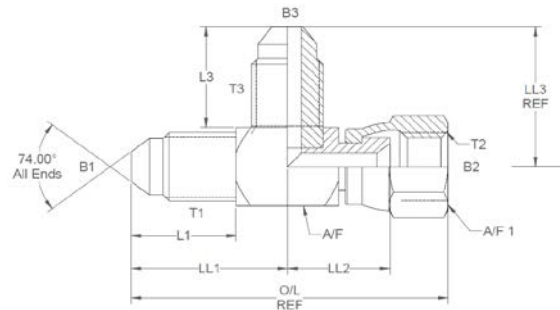
All dimensions are imperial unless stated.



	T1	T2	T3	B1	B2	B3	L1	L3	O/L	LL1	LL2	LL3	A/F	A/F1
12040	7/16	7/16	7/16	0.172	0.172	0.172	0.535	0.535	1.9	0.89	0.63	0.89	0.438	0.562
12041	1/2	1/2	1/2	0.234	0.234	0.234	0.535	0.535	2.05	0.95	0.65	0.95	0.562	0.625
12042	9/16	9/16	9/16	0.297	0.297	0.297	0.541	0.541	2.301	1.06	0.8	1.06	0.562	0.687
12043	3/4	3/4	3/4	0.391	0.391	0.391	0.642	0.642	2.625	1.25	0.88	1.25	0.750	0.875
12044	7/8	7/8	7/8	0.484	0.484	0.484	0.743	0.743	3.1	1.45	1.1	1.45	0.875	1
12045	1-1/16	1-1/16	1-1/16	0.609	0.609	0.609	0.849	0.849	3.44	1.66	1.1	1.66	1.062	1.25
12046	1-5/16	1-5/16	1-5/16	0.843	0.843	0.843	0.896	0.896	3.85	1.81	1.36	1.81	1.312	1.5
12047	1-5/8	1-5/8	1-5/8	1.078	1.078	1.078	0.943	0.943	4.4	2.06	1.73	2.06	1.625	50mm
12048	1-7/8	1-7/8	1-7/8	1.312	1.312	1.312	1.2	1.33	4.77	2.262	1.812	2.33	2	55mm
12050	2-1/2	2-1/2	2-1/2	1.781	1.781	1.781	1.55	1.865	6.57	3.175	2.455	3.24	2.75	70mm

DESIGN DETAILS AND SPECIFICATIONS SUBJECT TO CHANGE WITHOUT PRIOR NOTICE - Whilst every effort has been made to ensure the accuracy of the information supplied herein, Burnett & Hillman cannot be held responsible for any errors or omissions (E&OE)

A/F dimensions are imperial unless stated.



	T1	T2	T3	B1	B2	B3	L1	L3	O/L	LL1	LL2	LL3	A/F	A/F1
12040	7/16	7/16	7/16	0.172	0.172	0.172	0.535	0.535	1.9	0.89	0.63	0.89	0.438	0.562
12041	1/2	1/2	1/2	0.234	0.234	0.234	0.535	0.535	2.05	0.95	0.65	0.95	0.562	0.625
12042	9/16	9/16	9/16	0.297	0.297	0.297	0.541	0.541	2.301	1.06	0.8	1.06	0.562	0.687
12043	3/4	3/4	3/4	0.391	0.391	0.391	0.642	0.642	2.625	1.25	0.88	1.25	0.750	0.875
12044	7/8	7/8	7/8	0.484	0.484	0.484	0.743	0.743	3.1	1.45	1.1	1.45	0.875	1
12045	1-1/16	1-1/16	1-1/16	0.609	0.609	0.609	0.849	0.849	3.44	1.66	1.1	1.66	1.062	1.25
12046	1-5/16	1-5/16	1-5/16	0.843	0.843	0.843	0.896	0.896	3.85	1.81	1.36	1.81	1.312	1.5
12047	1-5/8	1-5/8	1-5/8	1.078	1.078	1.078	0.943	0.943	4.4	2.06	1.73	2.06	1.625	50mm
12048	1-7/8	1-7/8	1-7/8	1.312	1.312	1.312	1.2	1.33	4.77	2.262	1.812	2.33	2	55mm
12050	2-1/2	2-1/2	2-1/2	1.781	1.781	1.781	1.55	1.865	6.57	3.175	2.455	3.24	2.75	70mm

DESIGN DETAILS AND SPECIFICATIONS SUBJECT TO CHANGE WITHOUT PRIOR NOTICE - Whilst every effort has been made to ensure the accuracy of the information supplied herein, Burnett & Hillman cannot be held responsible for any errors or omissions (E&OE)