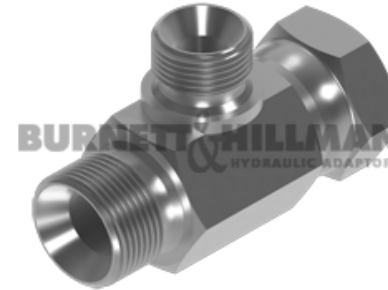
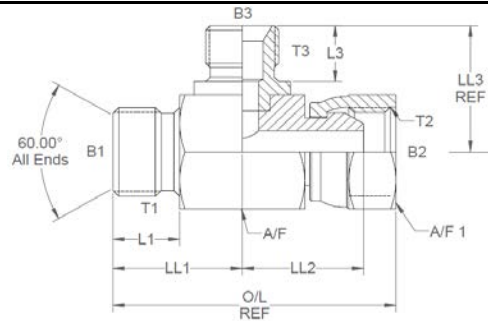


BSP male x BSP swivel female x BSP male branch tee REDUCING ON BRANCH

Oct-21
0514 IMP

All dimensions are imperial unless stated.



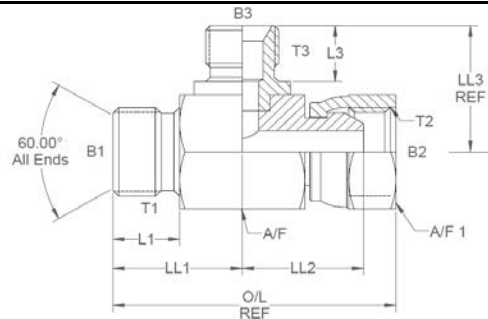
	T1	T2	T3	B1	B2	B3	L1	L3	O/L	LL1	LL2	LL3	A/F	A/F1
02025-04-08-08	1/4	1/2	1/2	0.25	0.39	0.39	0.45	0.6	2.39	0	0	1.256	27mm	27mm
02035	3/8	3/8	1/4	0.312	0.271	0.185	0.52	0.45	2.245	1	0.992	0.993	22mm	22mm
02036	3/8	1/2	1/2	0.312	0.375	0.39	0.52	0.6	2.45	1.082	1.09	1.256	27mm	27mm
02047	1/2	3/8	3/8	0.437	0.271	0.296	0.6	0.52	2.49	1.162	1.074	1.176	27mm	22mm
02032	1/2	1/2	1/4	0.437	0.375	0.185	0.6	0.45	2.53	1.162	1.09	1.091	27mm	27mm
02031	1/2	1/2	3/8	0.437	0.375	0.296	0.6	0.52	2.53	1.162	1.09	1.176	27mm	27mm
02022	3/4	3/4	1/4	0.6	0.6	0.185	0.75	0.45	3.1	1.48	1.23	1.189	32mm	32mm
02039	3/4	3/4	3/8	0.6	0.6	0.296	0.75	0.52	3.1	1.48	1.23	1.275	32mm	32mm
02037	3/4	3/4	1/2	0.6	0.6	0.39	0.75	0.6	3.1	1.48	1.23	1.355	32mm	32mm
02023	1	1	1/4	0.843	0.797	0.185	0.8	0.45	3.56	1.68	1.428	1.367	41mm	41mm
02023-16-16-06	1	1	3/8	0.843	0.797	0.296	0.8	0.52	3.56	1.68	1.428	1.452	41mm	41mm
02038	1	1	1/2	0.843	0.797	0.39	0.8	0.6	3.56	1.68	1.428	1.532	41mm	41mm
02018	1	1	3/4	0.843	0.797	0.562	0.8	0.75	3.56	1.68	1.428	1.707	41mm	41mm
02034-20-20-08	1-1/4	1-1/4	1/2	1.125	1.014	0.39	0.8	0.6	4.095	1.925	1.735	1.709	50mm	50mm
02034-20-20-16	1-1/4	1-1/4	1	1.125	1.014	0.75	0.8	0.8	4.095	1.925	1.735	1.944	50mm	50mm

DESIGN DETAILS AND SPECIFICATIONS SUBJECT TO CHANGE WITHOUT PRIOR NOTICE - Whilst every effort has been made to ensure the accuracy of the information supplied herein, Burnett & Hillman cannot be held responsible for any errors or omissions (E&OE)

BSP male x BSP swivel female x BSP male branch tee REDUCING ON BRANCH

Oct-21
0514 METRIC

A/F dimensions are imperial unless stated.



	T1	T2	T3	B1	B2	B3	L1	L3	O/L	LL1	LL2	LL3	A/F	A/F1
02025-04-08-08	1/4	1/2	1/2	0.25	0.39	0.39	0.45	0.6	2.39	0	0	1.256	27mm	27mm
02035	3/8	3/8	1/4	0.312	0.271	0.185	0.52	0.45	2.245	1	0.992	0.993	22mm	22mm
02036	3/8	1/2	1/2	0.312	0.375	0.39	0.52	0.6	2.45	1.082	1.09	1.256	27mm	27mm
02047	1/2	3/8	3/8	0.437	0.271	0.296	0.6	0.52	2.49	1.162	1.074	1.176	27mm	22mm
02032	1/2	1/2	1/4	0.437	0.375	0.185	0.6	0.45	2.53	1.162	1.09	1.091	27mm	27mm
02031	1/2	1/2	3/8	0.437	0.375	0.296	0.6	0.52	2.53	1.162	1.09	1.176	27mm	27mm
02022	3/4	3/4	1/4	0.6	0.6	0.185	0.75	0.45	3.1	1.48	1.23	1.189	32mm	32mm
02039	3/4	3/4	3/8	0.6	0.6	0.296	0.75	0.52	3.1	1.48	1.23	1.275	32mm	32mm
02037	3/4	3/4	1/2	0.6	0.6	0.39	0.75	0.6	3.1	1.48	1.23	1.355	32mm	32mm
02023	1	1	1/4	0.843	0.797	0.185	0.8	0.45	3.56	1.68	1.428	1.367	41mm	41mm
02023-16-16-06	1	1	3/8	0.843	0.797	0.296	0.8	0.52	3.56	1.68	1.428	1.452	41mm	41mm
02038	1	1	1/2	0.843	0.797	0.39	0.8	0.6	3.56	1.68	1.428	1.532	41mm	41mm
02018	1	1	3/4	0.843	0.797	0.562	0.8	0.75	3.56	1.68	1.428	1.707	41mm	41mm
02034-20-20-08	1-1/4	1-1/4	1/2	1.125	1.014	0.39	0.8	0.6	4.095	1.925	1.735	1.709	50mm	50mm
02034-20-20-16	1-1/4	1-1/4	1	1.125	1.014	0.75	0.8	0.8	4.095	1.925	1.735	1.944	50mm	50mm

DESIGN DETAILS AND SPECIFICATIONS SUBJECT TO CHANGE WITHOUT PRIOR NOTICE - Whilst every effort has been made to ensure the accuracy of the information supplied herein, Burnett & Hillman cannot be held responsible for any errors or omissions (E&OE)