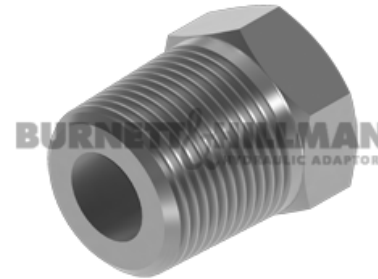
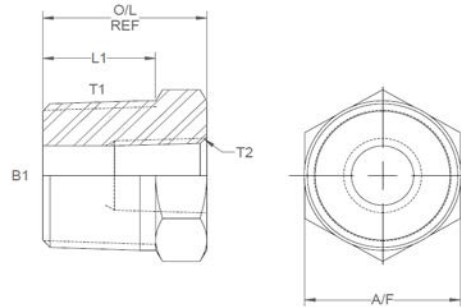


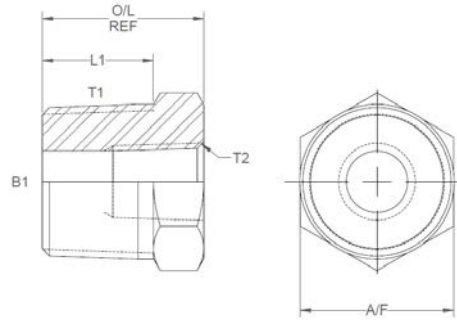
All dimensions are imperial unless stated.



	T1	T2	B1	L1	O/L	A/F
16180	1/4	1/8	0.33	0.58	0.9	0.562
16181	3/8	1/8	0.315	0.59	0.91	0.687
16182	3/8	1/4	0.44	0.59	0.91	0.687
16183	1/2	1/4	0.44	0.77	1.09	22mm
16184	1/2	3/8	0.561	0.77	1.09	22mm
16185	3/4	1/4	0.44	0.77	1.12	27mm
16186	3/4	3/8	0.561	0.77	1.15	27mm
16187	3/4	1/2	0.698	0.77	1.15	27mm
16196	1	1/4	0.44	1.08	1.565	1.375
16188	1	3/8	0.561	0.99	1.39	1.375
16190	1	1/2	0.698	0.99	1.49	1.375
16191	1	3/4	0.935	1.08	1.48	1.375
16206	1-1/4	1/2	0.698	1	1.5	1.75
16213	1-1/4	3/4	0.906	1	1.5	1.75
16209	1-1/4	1	1.142	1	1.5	1.75
16195	1-1/2	1/2	0.698	1.17	1.7	50mm
16214	0	0	0	0	0	0
16193	1-1/2	1	1.142	1.17	1.7	50mm
16189	2	1/2	0.698	1.18	1.83	65mm
16197	2	3/4	0.935	1.18	1.83	65mm

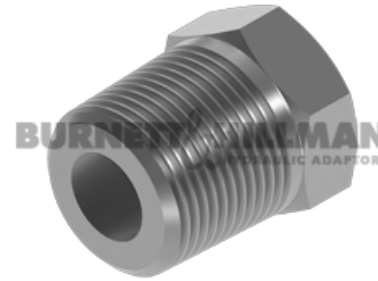
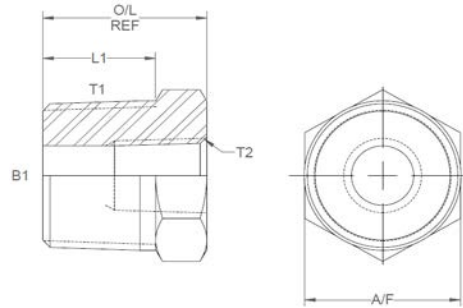
DESIGN DETAILS AND SPECIFICATIONS SUBJECT TO CHANGE WITHOUT PRIOR NOTICE - Whilst every effort has been made to ensure the accuracy of the information supplied herein, Burnett & Hillman cannot be held responsible for any errors or omissions (E&OE)

All dimensions are imperial unless stated.



	T1	T2	B1	L1	O/L	A/F
16198	2	1	1.142	1.18	1.83	65mm
16208	0	0	0	0	0	0
16192	2	1-1/2	1.728	1.18	1.83	65mm
16212	2-1/2	2	2.165	1.54	2.19	3.25
16199	3	2-1/2	2.74	1.562	2.262	90mm

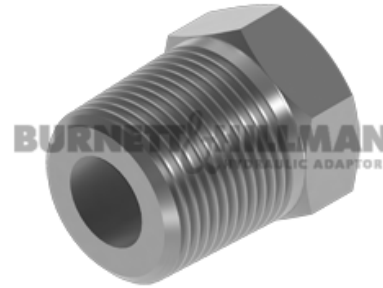
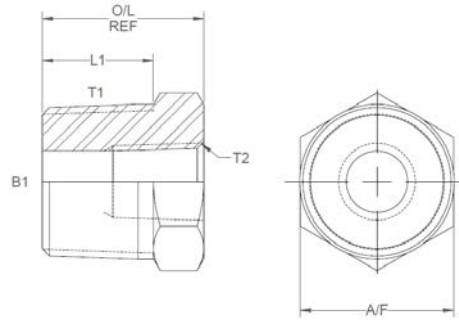
A/F dimensions are imperial unless stated.



	T1	T2	B1	L1	O/L	A/F
16180	1/4	1/8	8.38	14.73	22.86	0.562
16181	3/8	1/8	8	14.99	23.11	0.687
16182	3/8	1/4	11.18	14.99	23.11	0.687
16183	1/2	1/4	11.18	19.56	27.69	22mm
16184	1/2	3/8	14.25	19.56	27.69	22mm
16185	3/4	1/4	11.18	19.56	28.45	27mm
16186	3/4	3/8	14.25	19.56	29.21	27mm
16187	3/4	1/2	17.73	19.56	29.21	27mm
16196	1	1/4	11.18	27.43	39.75	1.375
16188	1	3/8	14.25	25.15	35.31	1.375
16190	1	1/2	17.73	25.15	37.85	1.375
16191	1	3/4	23.75	27.43	37.59	1.375
16206	1-1/4	1/2	17.73	25.4	38.1	1.75
16213	1-1/4	3/4	23.01	25.4	38.1	1.75
16209	1-1/4	1	29.01	25.4	38.1	1.75
16195	1-1/2	1/2	17.73	29.72	43.18	50mm
16214	0	0	0	0	0	0
16193	1-1/2	1	29.01	29.72	43.18	50mm
16189	2	1/2	17.73	29.97	46.48	65mm
16197	2	3/4	23.75	29.97	46.48	65mm

DESIGN DETAILS AND SPECIFICATIONS SUBJECT TO CHANGE WITHOUT PRIOR NOTICE - Whilst every effort has been made to ensure the accuracy of the information supplied herein, Burnett & Hillman cannot be held responsible for any errors or omissions (E&OE)

A/F dimensions are imperial unless stated.



	T1	T2	B1	L1	O/L	A/F
16198	2	1	29.01	29.97	46.48	65mm
16208	0	0	0	0	0	0
16192	2	1-1/2	43.89	29.97	46.48	65mm
16212	2-1/2	2	54.99	39.12	55.63	3.25
16199	3	2-1/2	69.6	39.67	57.45	90mm