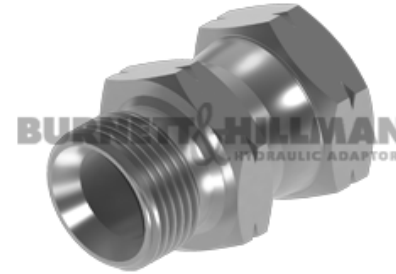
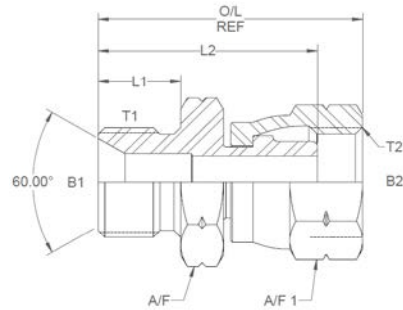


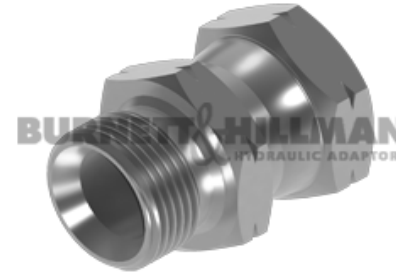
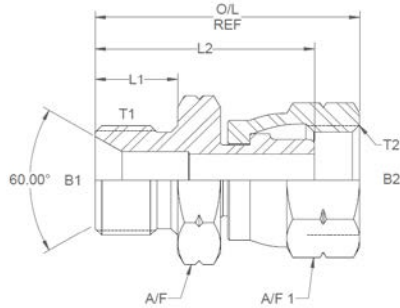
All dimensions are imperial unless stated.



	T1	T2	B1	B2	L1	L2	O/L	A/F	A/F1
01700	M12 x 1.5	M12 x 1.5	0.197	0.125	0.49	1.24	1.43	0.625	0.687
01701	M14 x 1.5	M14 x 1.5	0.296	0.203	0.49	1.31	1.47	19mm	19mm
01702	M16 x 1.5	M16 x 1.5	0.375	0.281	0.52	1.33	1.54	22mm	22mm
01709	M16 x 1.5	M18 x 1.5	0.312	0.343	0.52	1.382	1.59	22mm	24mm
01710	M18 x 1.5	M16 x 1.5	0.437	0.281	0.52	1.33	1.54	24mm	22mm
01703	M18 x 1.5	M18 x 1.5	0.375	0.343	0.52	1.382	1.59	24mm	24mm
01704	M18 x 1.5	M20 x 1.5	0.437	0.281	0.52	1.382	1.59	24mm	27mm
01711	M18 x 1.5	M20 x 1.5	0.437	0.437	0.52	1.392	1.61	24mm	27mm
01712	M20 x 1.5	M18 x 1.5	0.5	0.281	0.52	1.382	1.59	27mm	24mm
01705	M20 x 1.5	M20 x 1.5	0.5	0.281	0.52	1.382	1.59	27mm	27mm
01713	M20 x 1.5	M22 x 1.5	0.5	0.437	0.52	1.392	1.61	27mm	27mm
01707	M22 x 1.5	M18 x 1.5	0.562	0.343	0.54	1.402	1.59	27mm	24mm
01708	M22 x 1.5	M20 x 1.5	0.562	0.281	0.54	1.402	1.62	27mm	27mm
01706	M22 x 1.5	M22 x 1.5	0.562	0.437	0.54	1.442	1.66	27mm	27mm

DESIGN DETAILS AND SPECIFICATIONS SUBJECT TO CHANGE WITHOUT PRIOR NOTICE - Whilst every effort has been made to ensure the accuracy of the information supplied herein, Burnett & Hillman cannot be held responsible for any errors or omissions (E&OE)

A/F dimensions are imperial unless stated.



	T1	T2	B1	B2	L1	L2	O/L	A/F	A/F1
01700	M12 x 1.5	M12 x 1.5	5	3.18	12.45	31.5	36.32	0.625	0.687
01701	M14 x 1.5	M14 x 1.5	7.52	5.16	12.45	33.27	37.34	19mm	19mm
01702	M16 x 1.5	M16 x 1.5	9.53	7.14	13.21	33.78	39.12	22mm	22mm
01709	M16 x 1.5	M18 x 1.5	7.92	8.71	13.21	35.1	40.39	22mm	24mm
01710	M18 x 1.5	M16 x 1.5	11.1	7.14	13.21	33.78	39.12	24mm	22mm
01703	M18 x 1.5	M18 x 1.5	9.53	8.71	13.21	35.1	40.39	24mm	24mm
01704	M18 x 1.5	M20 x 1.5	11.1	7.14	13.21	35.1	40.39	24mm	27mm
01711	M18 x 1.5	M20 x 1.5	11.1	11.1	13.21	35.36	40.89	24mm	27mm
01712	M20 x 1.5	M18 x 1.5	12.7	7.14	13.21	35.1	40.39	27mm	24mm
01705	M20 x 1.5	M20 x 1.5	12.7	7.14	13.21	35.1	40.39	27mm	27mm
01713	M20 x 1.5	M22 x 1.5	12.7	11.1	13.21	35.36	40.89	27mm	27mm
01707	M22 x 1.5	M18 x 1.5	14.27	8.71	13.72	35.61	40.39	27mm	24mm
01708	M22 x 1.5	M20 x 1.5	14.27	7.14	13.72	35.61	41.15	27mm	27mm
01706	M22 x 1.5	M22 x 1.5	14.27	11.1	13.72	36.63	42.16	27mm	27mm

DESIGN DETAILS AND SPECIFICATIONS SUBJECT TO CHANGE WITHOUT PRIOR NOTICE - Whilst every effort has been made to ensure the accuracy of the information supplied herein, Burnett & Hillman cannot be held responsible for any errors or omissions (E&OE)