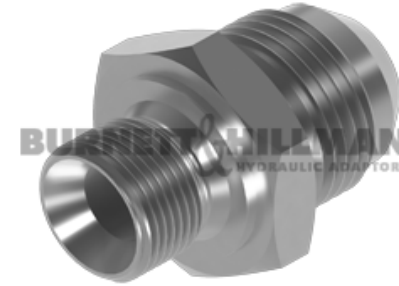
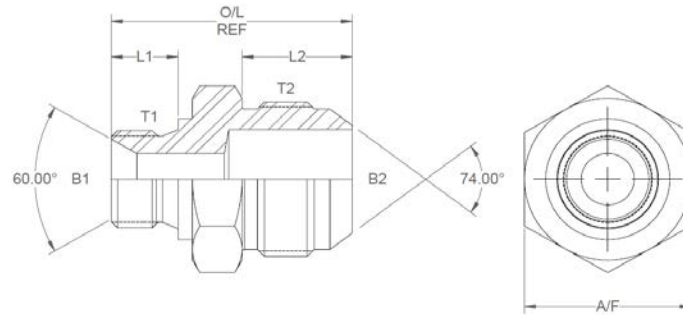


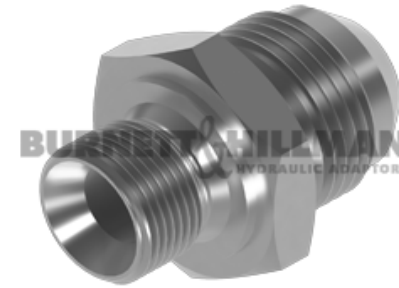
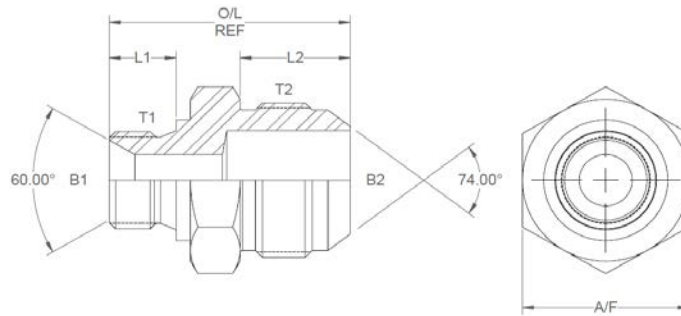
All dimensions are imperial unless stated.



	T1	T2	B1	B2	L1	L2	O/L	A/F
61164	1/8	3/8	0.137	0.125	0.315	0.479	1.048	14mm
61101	1/8	7/16	0.137	0.172	0.315	0.55	1.119	14mm
61102	1/8	1/2	0.156	0.234	0.315	0.55	1.174	14mm
61100	1/8	9/16	0.137	0.297	0.315	0.556	1.174	0.625
61160	1/4	5/16	0	0	0	0	0	0
61163	1/4	3/8	0.25	0.125	0.473	0.479	1.281	19mm
61103	1/4	7/16	0.185	0.172	0.473	0.55	1.352	19mm
61104	1/4	1/2	0.185	0.234	0.473	0.55	1.352	19mm
61105	1/4	9/16	0.185	0.297	0.473	0.556	1.358	19mm
61106	1/4	3/4	0.185	0.391	0.473	0.657	1.489	0.812
61107	1/4	7/8	0.185	0.484	0.473	0.758	1.61	1
61155	1/4	1-1/16	0.185	0.609	0.473	0.864	1.736	1.125
61168	1/4	1-3/16	0	0	0	0	0	0
61108	1/4	1-5/16	0	0	0	0	0	0
61170	3/8	3/8	0.297	0.125	0.473	0.479	1.27	22mm
61109	3/8	7/16	0.312	0.172	0.473	0.55	1.371	22mm
61110	3/8	1/2	0.312	0.234	0.473	0.55	1.371	22mm
61111	3/8	9/16	0.312	0.297	0.473	0.556	1.377	22mm
61112	3/8	3/4	0.312	0.391	0.473	0.657	1.478	22mm
61113	3/8	7/8	0.312	0.484	0.473	0.758	1.639	1

DESIGN DETAILS AND SPECIFICATIONS SUBJECT TO CHANGE WITHOUT PRIOR NOTICE - Whilst every effort has been made to ensure the accuracy of the information supplied herein, Burnett & Hillman cannot be held responsible for any errors or omissions (E&OE)

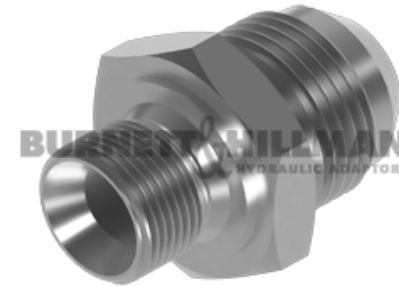
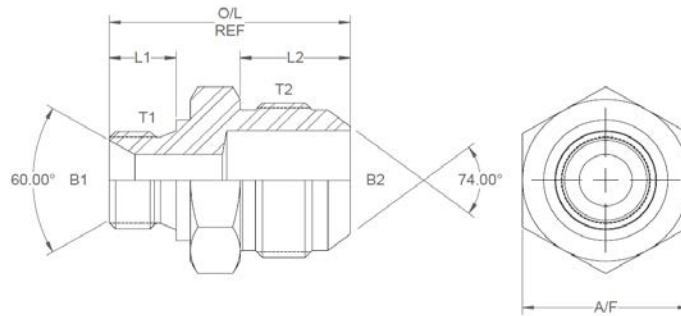
All dimensions are imperial unless stated.



	T1	T2	B1	B2	L1	L2	O/L	A/F
61114	3/8	1-1/16	0	0	0	0	0	0
61171	3/8	1-3/16	0.312	0.719	0.473	0.89	1.861	1.25
61115	3/8	1-5/16	0.312	0.844	0.473	0.911	1.902	1.375
61116	1/2	7/16	0.437	0.172	0.552	0.55	1.54	27mm
61117	1/2	1/2	0.437	0.234	0.552	0.55	1.47	27mm
61118	1/2	9/16	0.437	0.297	0.552	0.556	1.47	27mm
61119	1/2	3/4	0.437	0.391	0.552	0.657	1.577	27mm
61120	1/2	7/8	0.437	0.484	0.552	0.758	1.678	27mm
61121	1/2	1-1/16	0.437	0.609	0.552	0.864	1.874	30mm
61122	1/2	1-5/16	0	0	0	0	0	0
61161	1/2	1-7/8	0	0	0	0	0	0
61123	5/8	9/16	0	0	0	0	0	0
61124	5/8	3/4	0.562	0.391	0.63	0.657	1.763	30mm
61125	5/8	7/8	0.562	0.484	0.63	0.758	1.863	30mm
61126	5/8	1-1/16	0.562	0.609	0.63	0.864	1.94	30mm
61127	5/8	1-3/16	0	0	0	0	0	0
61128	5/8	1-5/16	0	0	0	0	0	0
61129	3/4	7/16	0	0	0	0	0	0
61130	3/4	1/2	0	0	0	0	0	0
61150	3/4	9/16	0	0	0	0	0	0

DESIGN DETAILS AND SPECIFICATIONS SUBJECT TO CHANGE WITHOUT PRIOR NOTICE - Whilst every effort has been made to ensure the accuracy of the information supplied herein, Burnett & Hillman cannot be held responsible for any errors or omissions (E&OE)

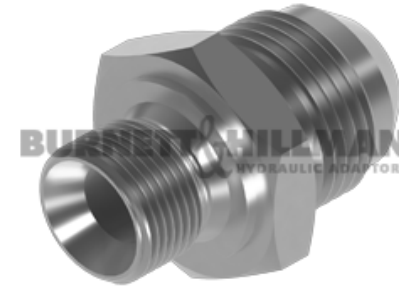
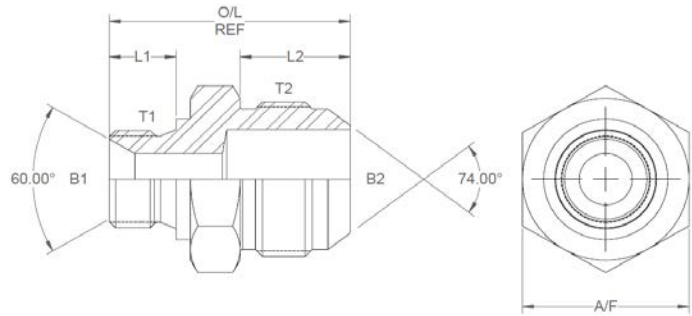
All dimensions are imperial unless stated.



	T1	T2	B1	B2	L1	L2	O/L	A/F
61131	3/4	3/4	0.659	0.391	0.63	0.657	1.715	32mm
61132	3/4	7/8	0.659	0.484	0.63	0.758	1.816	32mm
61133	3/4	1-1/16	0.659	0.609	0.63	0.864	1.922	32mm
61134	3/4	1-3/16	0.718	0	0.63	0.89	1.948	32mm
61135	3/4	1-5/16	0.659	0.844	0.63	0.911	2.079	1.375
61148	3/4	1-5/8	0.659	1.078	0.63	0.958	2.126	46mm
61158	3/4	1-7/8	0	0	0	0	0	0
61169	1	9/16	0	0	0	0	0	0
61136	1	3/4	0.875	0.391	0.709	0.657	1.834	41mm
61137	1	7/8	0.875	0.484	0.709	0.758	1.935	41mm
61138	1	1-1/16	0.875	0.609	0.709	0.864	2.041	41mm
61139	1	1-3/16	0.845	0.719	0.709	0.89	2.067	41mm
61140	1	1-5/16	0.875	0.844	0.709	0.911	2.088	41mm
61141	1	1-5/8	0.875	1.078	0.709	0.958	2.205	1.750
61156	1	1-7/8	0	0	0	0	0	0
61151	1	2-1/2	0	0	0	0	0	0
61142	1-1/4	1-1/16	1.203	0.609	0.788	0.864	2.17	50mm
61143	1-1/4	1-5/16	1.203	0.844	0.788	0.911	2.217	50mm
61144	1-1/4	1-5/8	1.125	1.078	0.788	0.958	2.324	50mm
61145	1-1/4	1-7/8	1.125	1.312	0.788	1.083	2.439	50mm

DESIGN DETAILS AND SPECIFICATIONS SUBJECT TO CHANGE WITHOUT PRIOR NOTICE - Whilst every effort has been made to ensure the accuracy of the information supplied herein, Burnett & Hillman cannot be held responsible for any errors or omissions (E&OE)

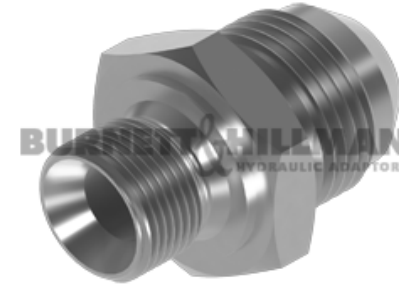
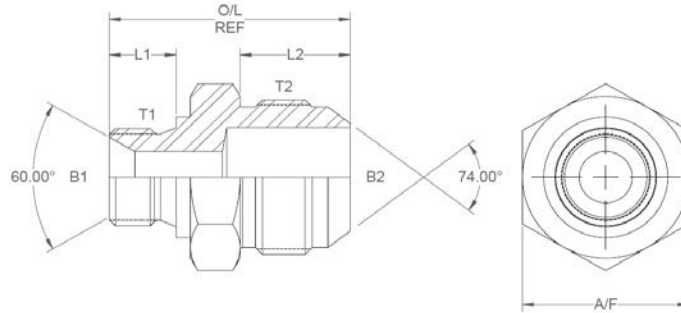
All dimensions are imperial unless stated.



	T1	T2	B1	B2	L1	L2	O/L	A/F
61152	1-1/4	2-1/2	1.125	1.781	0.788	1.335	2.731	65mm
61159	1-1/2	1-1/16	0	0	0	0	0	0
61149	1-1/2	1-5/16	1.312	0.844	0.866	0.911	2.345	55mm
61154	1-1/2	1-5/8	1.312	1.078	0.866	0.958	2.392	55mm
61146	1-1/2	1-7/8	1.312	0	0.866	1.083	2.517	55mm
61153	1-1/2	2-1/2	1.312	1.781	0.866	1.333	2.817	65mm
61162	2	1-5/16	0	0	0	0	0	0
61157	2	1-7/8	1.812	1.312	0.945	1.083	2.666	70mm
61147	2	2-1/2	1.812	1.781	0.945	1.333	2.918	70mm
61165	3	1-7/8	0	0	0	0	0	0
61166	3	2-1/2	0	0	0	0	0	0
61167	3-1/2	2-1/2	0	0	0	0	0	0

BSP male DIN 3852 Form A x JIC male

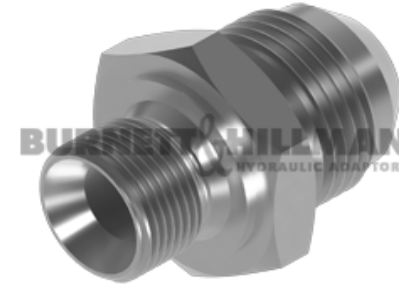
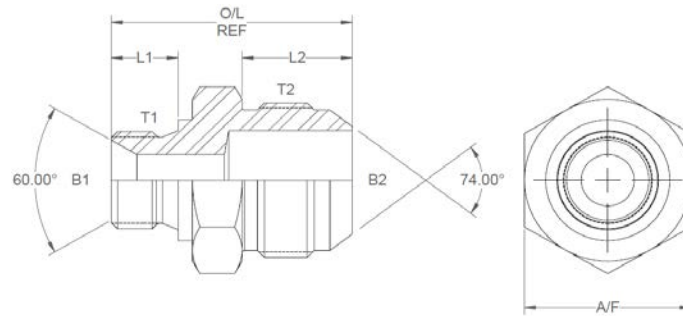
A/F dimensions are imperial unless stated.



	T1	T2	B1	B2	L1	L2	O/L	A/F
61164	1/8	3/8	3.48	3.18	8.00	12.17	26.62	14mm
61101	1/8	7/16	3.48	4.37	8.00	13.97	28.42	14mm
61102	1/8	1/2	3.96	5.94	8.00	13.97	29.82	14mm
61100	1/8	9/16	3.48	7.54	8.00	14.12	29.82	0.625
61160	1/4	5/16	0	0	0	0	0	0
61163	1/4	3/8	6.35	3.18	12.01	12.17	32.54	19mm
61103	1/4	7/16	4.70	4.37	12.01	13.97	34.34	19mm
61104	1/4	1/2	4.70	5.94	12.01	13.97	34.34	19mm
61105	1/4	9/16	4.70	7.54	12.01	14.12	34.49	19mm
61106	1/4	3/4	4.70	9.93	12.01	16.69	37.82	0.812
61107	1/4	7/8	4.70	12.29	12.01	19.25	40.89	1
61155	1/4	1-1/16	4.70	15.47	12.01	21.95	44.09	1.125
61168	1/4	1-3/16	0	0	0	0	0	0
61108	1/4	1-5/16	0	0	0	0	0	0
61170	3/8	3/8	7.54	3.18	12.01	12.17	32.26	22mm
61109	3/8	7/16	7.92	4.37	12.01	13.97	34.82	22mm
61110	3/8	1/2	7.92	5.94	12.01	13.97	34.82	22mm
61111	3/8	9/16	7.92	7.54	12.01	14.12	34.98	22mm
61112	3/8	3/4	7.92	9.93	12.01	16.69	37.54	22mm
61113	3/8	7/8	7.92	12.29	12.01	19.25	41.63	1

DESIGN DETAILS AND SPECIFICATIONS SUBJECT TO CHANGE WITHOUT PRIOR NOTICE - Whilst every effort has been made to ensure the accuracy of the information supplied herein, Burnett & Hillman cannot be held responsible for any errors or omissions (E&OE)

A/F dimensions are imperial unless stated.

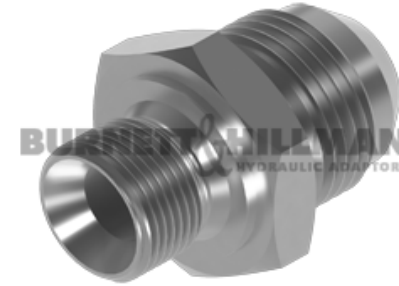
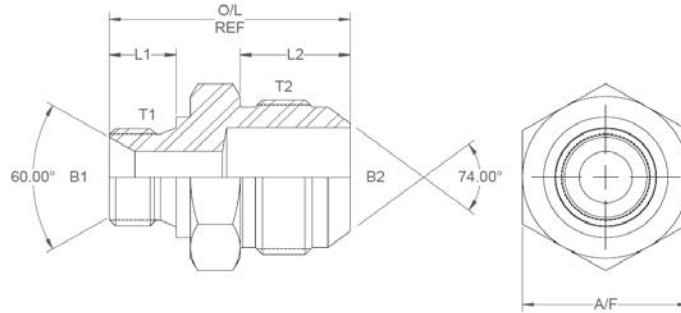


	T1	T2	B1	B2	L1	L2	O/L	A/F
61114	3/8	1-1/16	0	0	0	0	0	0
61171	3/8	1-3/16	7.92	18.26	12.01	22.61	47.27	1.25
61115	3/8	1-5/16	7.92	21.44	12.01	23.14	48.31	1.375
61116	1/2	7/16	11.1	4.37	14.02	13.97	39.12	27mm
61117	1/2	1/2	11.1	5.94	14.02	13.97	37.34	27mm
61118	1/2	9/16	11.1	7.54	14.02	14.12	37.34	27mm
61119	1/2	3/4	11.10	9.93	14.02	16.69	40.06	27mm
61120	1/2	7/8	11.10	12.29	14.02	19.25	42.62	27mm
61121	1/2	1-1/16	11.10	15.47	14.02	21.95	47.60	30mm
61122	1/2	1-5/16	0	0	0	0	0	0
61161	1/2	1-7/8	0	0	0	0	0	0
61123	5/8	9/16	0	0	0	0	0	0
61124	5/8	3/4	14.27	9.93	16.00	16.69	44.78	30mm
61125	5/8	7/8	14.27	12.29	16.00	19.25	47.32	30mm
61126	5/8	1-1/16	14.27	15.47	16.00	21.95	49.28	30mm
61127	5/8	1-3/16	0	0	0	0	0	0
61128	5/8	1-5/16	0	0	0	0	0	0
61129	3/4	7/16	0	0	0	0	0	0
61130	3/4	1/2	0	0	0	0	0	0
61150	3/4	9/16	0	0	0	0	0	0

DESIGN DETAILS AND SPECIFICATIONS SUBJECT TO CHANGE WITHOUT PRIOR NOTICE - Whilst every effort has been made to ensure the accuracy of the information supplied herein, Burnett & Hillman cannot be held responsible for any errors or omissions (E&OE)

BSP male DIN 3852 Form A x JIC male

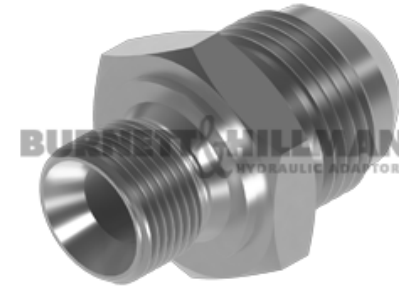
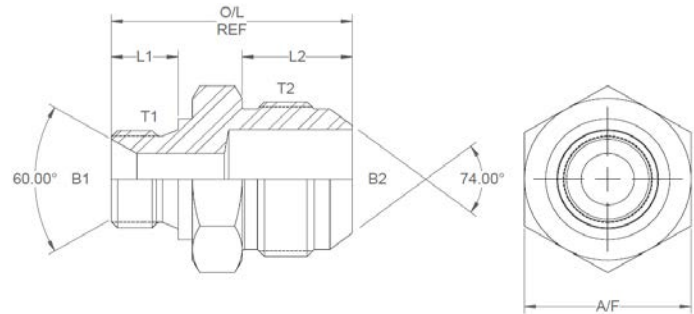
A/F dimensions are imperial unless stated.



	T1	T2	B1	B2	L1	L2	O/L	A/F
61131	3/4	3/4	16.74	9.93	16.00	16.69	43.56	32mm
61132	3/4	7/8	16.74	12.29	16.00	19.25	46.13	32mm
61133	3/4	1-1/16	16.74	15.47	16.00	21.95	48.82	32mm
61134	3/4	1-3/16	18.24	0.00	16.00	22.61	49.48	32mm
61135	3/4	1-5/16	16.74	21.44	16.00	23.14	52.81	1.375
61148	3/4	1-5/8	16.74	27.38	16.00	24.33	54.00	46mm
61158	3/4	1-7/8	0	0	0	0	0	0
61169	1	9/16	0	0	0	0	0	0
61136	1	3/4	22.23	9.93	18.01	16.69	46.58	41mm
61137	1	7/8	22.23	12.29	18.01	19.25	49.15	41mm
61138	1	1-1/16	22.23	15.47	18.01	21.95	51.84	41mm
61139	1	1-3/16	21.46	18.26	18.01	22.61	52.50	41mm
61140	1	1-5/16	22.23	21.44	18.01	23.14	53.04	41mm
61141	1	1-5/8	22.23	27.38	18.01	24.33	56.01	1.750
61156	1	1-7/8	0	0	0	0	0	0
61151	1	2-1/2	0	0	0	0	0	0
61142	1-1/4	1-1/16	30.56	15.47	20.02	21.95	55.12	50mm
61143	1-1/4	1-5/16	30.56	21.44	20.02	23.14	56.31	50mm
61144	1-1/4	1-5/8	28.58	27.38	20.02	24.33	59.03	50mm
61145	1-1/4	1-7/8	28.58	33.32	20.02	27.51	61.95	50mm

DESIGN DETAILS AND SPECIFICATIONS SUBJECT TO CHANGE WITHOUT PRIOR NOTICE - Whilst every effort has been made to ensure the accuracy of the information supplied herein, Burnett & Hillman cannot be held responsible for any errors or omissions (E&OE)

A/F dimensions are imperial unless stated.



	T1	T2	B1	B2	L1	L2	O/L	A/F
61152	1-1/4	2-1/2	28.58	45.24	20.02	33.91	69.37	65mm
61159	1-1/2	1-1/16	0	0	0	0	0	0
61149	1-1/2	1-5/16	33.32	21.44	22.00	23.14	59.56	55mm
61154	1-1/2	1-5/8	33.32	27.38	22.00	24.33	60.76	55mm
61146	1-1/2	1-7/8	33.32	0.00	22.00	27.51	63.93	55mm
61153	1-1/2	2-1/2	33.32	45.24	22.00	33.86	71.55	65mm
61162	2	1-5/16	0	0	0	0	0	0
61157	2	1-7/8	46.02	33.32	24.00	27.51	67.72	70mm
61147	2	2-1/2	46.02	45.24	24.00	33.86	74.12	70mm
61165	3	1-7/8	0	0	0	0	0	0
61166	3	2-1/2	0	0	0	0	0	0
61167	3-1/2	2-1/2	0	0	0	0	0	0