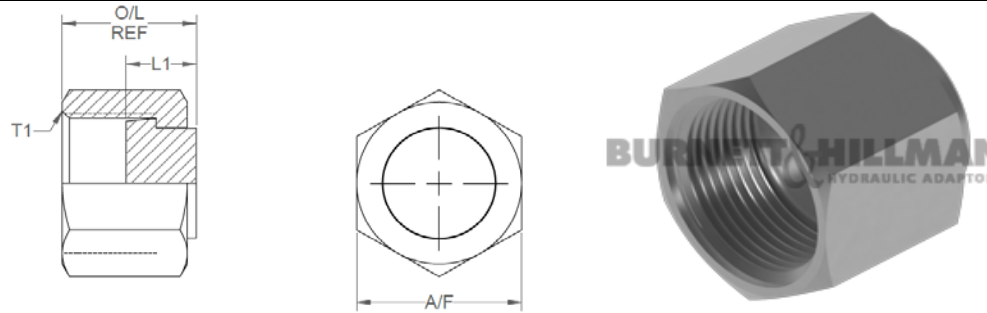
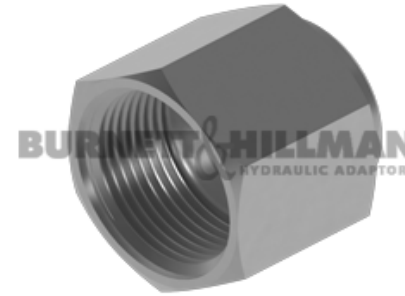
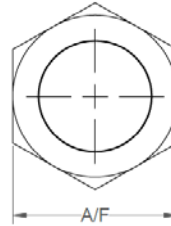
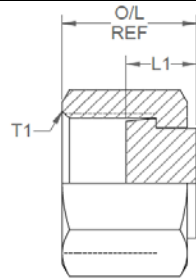


All dimensions are imperial unless stated.



	T1	L1	O/L	A/F
9129-04	9/16	0.34	0.66	0.687
9129-06	11/16	0.37	0.75	0.812
9129-08	13/16	0.47	0.86	0.938
9129-10	1	0.47	1.02	1.125
9129-12	1-3/16	0.53	1.125	1.375
9129-16	1-7/16	0.59	1.165	1.625
9129-20	1-11/16	0.59	1.165	1.875
9129-24	2	0.59	1.165	2.250

A/F dimensions are imperial unless stated.



	T1	L1	O/L	A/F
9129-04	9/16	8.64	16.76	0.687
9129-06	11/16	9.4	19.05	0.812
9129-08	13/16	11.94	21.84	0.938
9129-10	1	11.94	25.91	1.125
9129-12	1-3/16	13.46	28.58	1.375
9129-16	1-7/16	14.99	29.59	1.625
9129-20	1-11/16	14.99	29.59	1.875
9129-24	2	14.99	29.59	2.250