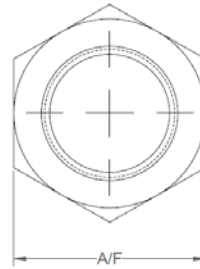
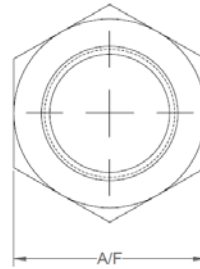
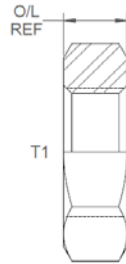


All dimensions are imperial unless stated.



	T1	O/L	A/F
00286	3/8	0.22	0.625
00275	7/16	0.25	0.687
00276	1/2	0.25	0.75
00277	9/16	0.27	0.812
00278	3/4	0.325	1
00279	7/8	0.375	1.125
00280	1-1/16	0.41	1.375
00284	1-3/16	0.4	1.375
00281	1-5/16	0.41	41mm
00282	1-5/8	0.41	1.875
00283	1-7/8	0.41	55mm
00287	2-1/2	0.41	70mm

A/F dimensions are imperial unless stated.



	T1	O/L	A/F
00286	3/8	5.59	0.625
00275	7/16	6.35	0.687
00276	1/2	6.35	0.75
00277	9/16	6.86	0.812
00278	3/4	8.26	1
00279	7/8	9.53	1.125
00280	1-1/16	10.41	1.375
00284	1-3/16	10.16	1.375
00281	1-5/16	10.41	41mm
00282	1-5/8	10.41	1.875
00283	1-7/8	10.41	55mm
00287	2-1/2	10.41	70mm