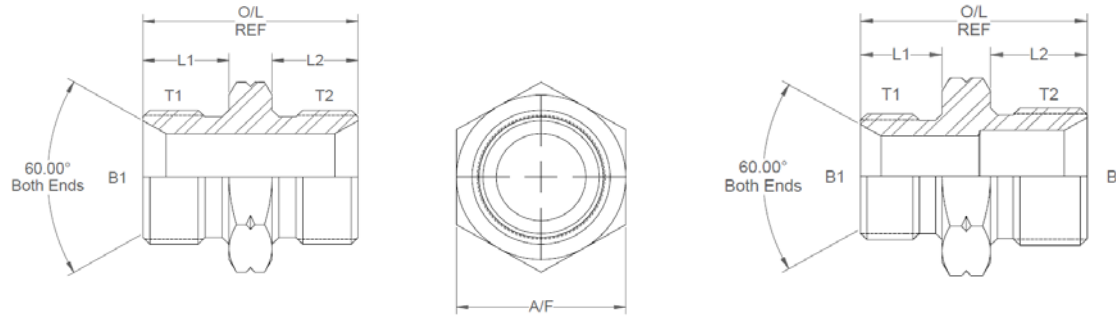
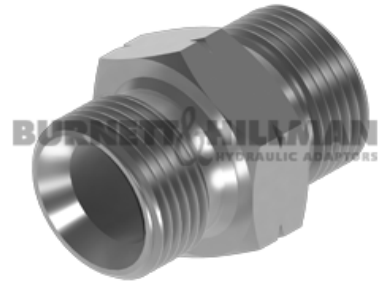


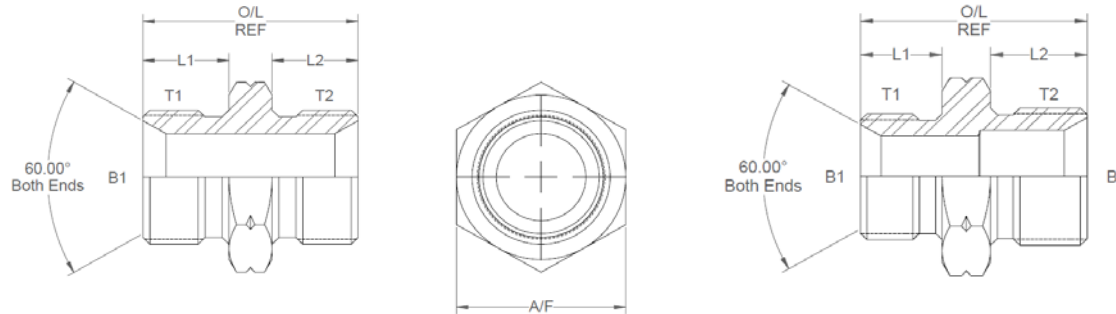
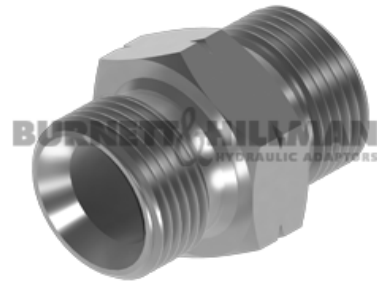
All dimensions are imperial unless stated.



	T1	T2	B1	B2	L1	L2	O/L	A/F
00425	M10 x 1.5	M10 x 1.5	0.171		0.49	0.49	1.18	14mm
00426	M10 x 1.5	M12 x 1.5	0.171	0.197	0.49	0.49	1.18	17mm
00427	M10 x 1.5	M14 x 1.5	0.171	0.296	0.49	0.49	1.18	19mm
00428	M10 x 1.5	M16 x 1.5	0.171	0.375	0.49	0.52	1.28	22mm
00429	M12 x 1.5	M12 x 1.5	0.197		0.49	0.49	1.18	17mm
00430	M12 x 1.5	M14 x 1.5	0.197	0.296	0.49	0.49	1.22	19mm
00431	M12 x 1.5	M16 x 1.5	0.197	0.375	0.49	0.52	1.28	22mm
00465	M12 x 1.5	M18 x 1.5	0.197	0.437	0.49	0.52	1.28	24mm
00432	M14 x 1.5	M14 x 1.5	0.296		0.49	0.49	1.18	19mm
00433	M14 x 1.5	M16 x 1.5	0.296	0.375	0.49	0.52	1.28	22mm
00434	M14 x 1.5	M18 x 1.5	0.296	0.437	0.49	0.52	1.28	24mm
00435	M14 x 1.5	M20 x 1.5	0.296	0.5	0.49	0.52	1.29	1.01
00463	M14 x 1.5	M22 x 1.5	0.296	0.562	0.49	0.54	1.3	27mm
00437	M16 x 1.5	M16 x 1.5	0.375		0.52	0.52	1.31	22mm
00438	M16 x 1.5	M18 x 1.5	0.375	0.437	0.52	0.52	1.31	24mm
00439	M16 x 1.5	M20 x 1.5	0.375	0.5	0.52	0.52	1.31	27mm
00440	M16 x 1.5	M22 x 1.5	0.375	0.562	0.52	0.54	1.34	27mm
00472	M16 x 1.5	M24 x 1.5	0	0	0	0	0	0
00441	M16 x 1.5	M24 x 1.5	0.375	0.718	0.52	0.74	1.58	32mm
00442	M18 x 1.5	M18 x 1.5	0.437		0.52	0.52	1.31	24mm

DESIGN DETAILS AND SPECIFICATIONS SUBJECT TO CHANGE WITHOUT PRIOR NOTICE - Whilst every effort has been made to ensure the accuracy of the information supplied herein, Burnett & Hillman cannot be held responsible for any errors or omissions (E&OE)

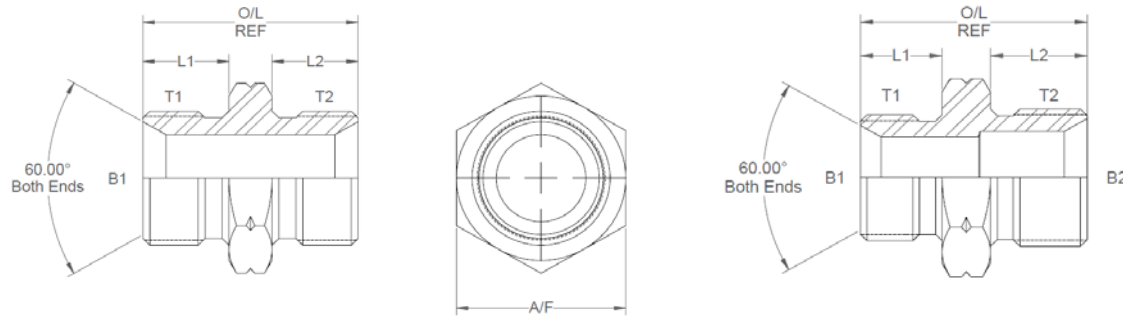
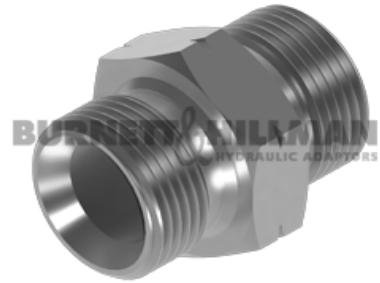
All dimensions are imperial unless stated.



	T1	T2	B1	B2	L1	L2	O/L	A/F
00443	M18 x 1.5	M20 x 1.5	0.437	0.5	0.52	0.52	1.31	27mm
00444	M18 x 1.5	M22 x 1.5	0.437	0.562	0.52	0.54	1.33	27mm
00466	M18 x 1.5	M24 x 1.5	0.437	0.64	0.52	0.64	1.48	30mm
00445	M18 x 1.5	M26 x 1.5	0.437	0.659	0.52	0.74	1.58	32mm
00446	M18 x 1.5	M30 x 1.5	0.437	0.812	0.52	0.8	1.68	1.5
00447	M20 x 1.5	M20 x 1.5	0.5		0.52	0.52	1.31	27mm
00448	M20 x 1.5	M22 x 1.5	0.5	0.562	0.52	0.54	1.33	27mm
00467	M20 x 1.5	M24 x 1.5	0.5	0.64	0.52	0.64	1.48	30mm
00468	M20 x 1.5	M26 x 1.5	0.5	0.718	0.52	0.74	1.63	32mm
00450	M22 x 1.5	M22 x 1.5	0.562		0.54	0.54	1.35	27mm
00451	M22 x 1.5	M24 x 1.5	0.562	0.64	0.54	0.64	1.5	30mm
00452	M22 x 1.5	M26 x 1.5	0.5	0.659	0.54	0.74	1.61	32mm
00453	M22 x 1.5	M30 x 1.5	0.562	0.812	0.54	0.8	1.7	1.5
00454	M24 x 1.5	M24 x 1.5	0.64		0.64	0.64	1.6	30mm
00469	M24 x 1.5	M26 x 1.5	0.64	0.718	0.64	0.74	1.7	32mm
00455	M26 x 1.5	M26 x 1.5	0.718		0.74	0.74	1.8	32mm
00457	M30 x 1.5	M30 x 1.5	0.812		0.8	0.8	1.96	1.5
00464	M30 x 1.5	M38 x 1.5	0.812	1.047	0.8	0.8	2.02	46mm
00458	M38 x 1.5	M38 x 1.5	1.047		0.8	0.8	2.02	46mm

DESIGN DETAILS AND SPECIFICATIONS SUBJECT TO CHANGE WITHOUT PRIOR NOTICE - Whilst every effort has been made to ensure the accuracy of the information supplied herein, Burnett & Hillman cannot be held responsible for any errors or omissions (E&OE)

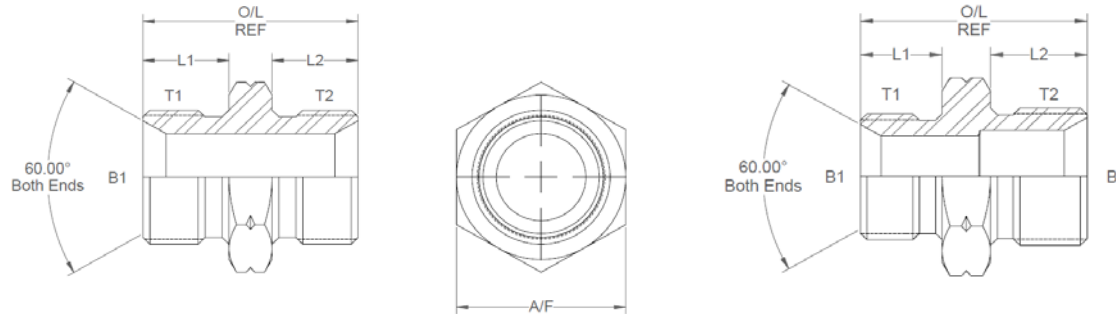
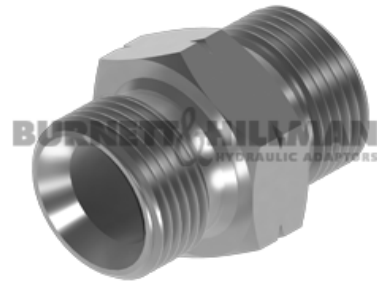
A/F dimensions are imperial unless stated.



	T1	T2	B1	B2	L1	L2	O/L	A/F
00425	M10 x 1.5	M10 x 1.5	4.34		12.45	12.45	29.97	14mm
00426	M10 x 1.5	M12 x 1.5	4.34	5.00	12.45	12.45	29.97	17mm
00427	M10 x 1.5	M14 x 1.5	4.34	7.52	12.45	12.45	29.97	19mm
00428	M10 x 1.5	M16 x 1.5	4.34	9.53	12.45	13.21	32.51	22mm
00429	M12 x 1.5	M12 x 1.5	5		12.45	12.45	29.97	17mm
00430	M12 x 1.5	M14 x 1.5	5	7.52	12.45	12.45	30.99	19mm
00431	M12 x 1.5	M16 x 1.5	5.00	9.53	12.45	13.21	32.51	22mm
00465	M12 x 1.5	M18 x 1.5	5.00	11.10	12.45	13.21	32.51	24mm
00432	M14 x 1.5	M14 x 1.5	7.52		12.45	12.45	29.97	19mm
00433	M14 x 1.5	M16 x 1.5	7.52	9.53	12.45	13.21	32.51	22mm
00434	M14 x 1.5	M18 x 1.5	7.52	11.10	12.45	13.21	32.51	24mm
00435	M14 x 1.5	M20 x 1.5	7.52	12.70	12.45	13.21	32.77	1.01
00463	M14 x 1.5	M22 x 1.5	7.52	14.27	12.45	13.72	33.02	27mm
00437	M16 x 1.5	M16 x 1.5	9.53		13.21	13.21	33.27	22mm
00438	M16 x 1.5	M18 x 1.5	9.53	11.10	13.21	13.21	33.27	24mm
00439	M16 x 1.5	M20 x 1.5	9.53	12.70	13.21	13.21	33.27	27mm
00440	M16 x 1.5	M22 x 1.5	9.53	14.27	13.21	13.72	34.04	27mm
00472	M16 x 1.5	M24 x 1.5	0	0	0	0	0	0
00441	M16 x 1.5	M24 x 1.5	9.53	18.24	13.21	18.80	40.13	32mm
00442	M18 x 1.5	M18 x 1.5	11.10		13.21	13.21	33.27	24mm

DESIGN DETAILS AND SPECIFICATIONS SUBJECT TO CHANGE WITHOUT PRIOR NOTICE - Whilst every effort has been made to ensure the accuracy of the information supplied herein, Burnett & Hillman cannot be held responsible for any errors or omissions (E&OE)

A/F dimensions are imperial unless stated.



	T1	T2	B1	B2	L1	L2	O/L	A/F
00443	M18 x 1.5	M20 x 1.5	11.1	12.70	13.21	13.21	33.27	27mm
00444	M18 x 1.5	M22 x 1.5	11.1	14.27	13.21	13.72	33.78	27mm
00466	M18 x 1.5	M24 x 1.5	11.1	16.26	13.21	16.26	37.59	30mm
00445	M18 x 1.5	M26 x 1.5	11.1	16.74	13.21	18.80	40.13	32mm
00446	M18 x 1.5	M30 x 1.5	11.1	20.62	13.21	20.32	42.67	1.5
00447	M20 x 1.5	M20 x 1.5	12.7		13.21	13.21	33.27	27mm
00448	M20 x 1.5	M22 x 1.5	12.70	14.27	13.21	13.72	33.78	27mm
00467	M20 x 1.5	M24 x 1.5	12.70	16.26	13.21	16.26	37.59	30mm
00468	M20 x 1.5	M26 x 1.5	12.70	18.24	13.21	18.80	41.40	32mm
00450	M22 x 1.5	M22 x 1.5	14.27		13.72	13.72	34.29	27mm
00451	M22 x 1.5	M24 x 1.5	14.27	16.26	13.72	16.26	38.10	30mm
00452	M22 x 1.5	M26 x 1.5	12.70	16.74	13.72	18.80	40.89	32mm
00453	M22 x 1.5	M30 x 1.5	14.27	20.62	13.72	20.32	43.18	1.5
00454	M24 x 1.5	M24 x 1.5	16.26		16.26	16.26	40.64	30mm
00469	M24 x 1.5	M26 x 1.5	16.26	18.24	16.26	18.80	43.18	32mm
00455	M26 x 1.5	M26 x 1.5	18.24		18.80	18.80	45.72	32mm
00457	M30 x 1.5	M30 x 1.5	20.62		20.32	20.32	49.78	1.5
00464	M30 x 1.5	M38 x 1.5	20.62	26.59	20.32	20.32	51.31	46mm
00458	M38 x 1.5	M38 x 1.5	26.59		20.32	20.32	51.31	46mm

DESIGN DETAILS AND SPECIFICATIONS SUBJECT TO CHANGE WITHOUT PRIOR NOTICE - Whilst every effort has been made to ensure the accuracy of the information supplied herein, Burnett & Hillman cannot be held responsible for any errors or omissions (E&OE)