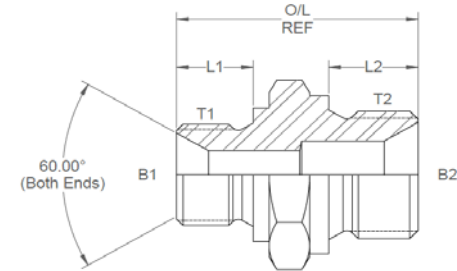
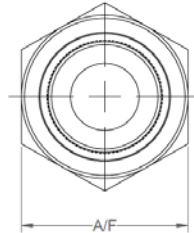
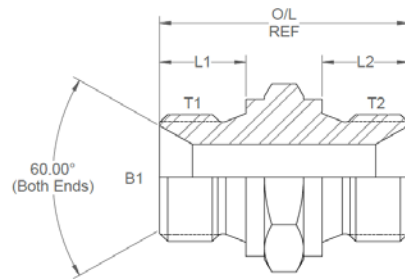


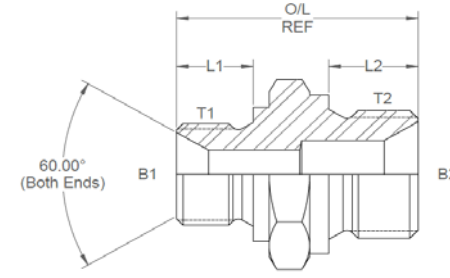
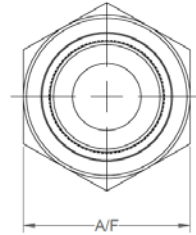
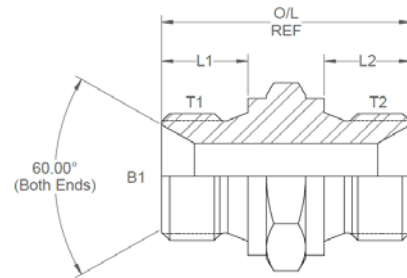
All dimensions are imperial unless stated.



	T1	T2	B1	B2	L1	L2	O/L	A/F
09900	1/8	1/8	0.137		0.315	0.315	0.943	14mm
09901	1/8	1/4	0.137	0.185	0.315	0.473	1.176	19mm
09902	1/8	3/8	0.137	0.312	0.315	0.473	1.195	22mm
09904	1/4	1/4	0.185		0.473	0.473	1.354	19mm
09906	1/4	3/8	0.185	0.312	0.473	0.473	1.373	22mm
09907	1/4	1/2	0.185	0.437	0.473	0.552	1.472	27mm
09909	1/4	3/4	0.185	0.659	0.473	0.63	1.61	32mm
09914	3/8	3/8	0.312		0.473	0.473	1.362	22mm
09915	3/8	1/2	0.312	0.437	0.473	0.552	1.491	27mm
09918	3/8	5/8	0.312	0.562	0.473	0.629	1.557	30mm
09916	3/8	3/4	0.312	0.659	0.473	0.63	1.63	32mm
09919	3/8	1-1/4	0.312	1.125	0.473	0.788	1.89	50mm
09920	3/8	1-1/2	0.375	1.437	0.473	0.866	2.03	55mm
09921	1/2	1/2	0.437		0.552	0.552	1.59	27mm
09922	1/2	5/8	0.437	0.562	0.552	0.63	1.73	30mm
09923	1/2	3/4	0.437	0.659	0.552	0.63	1.728	32mm
09924	1/2	1	0.437	0.875	0.552	0.709	1.865	41mm
09928	5/8	5/8	0.562		0.63	0.63	1.782	30mm
09929	5/8	3/4	0.562	0.659	0.63	0.63	1.794	32mm
09932	3/4	3/4	0.659		0.63	0.63	1.806	32mm

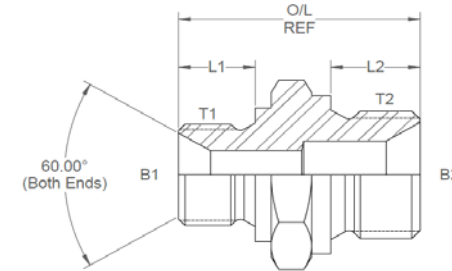
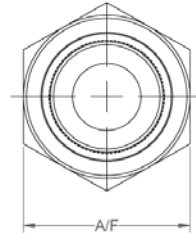
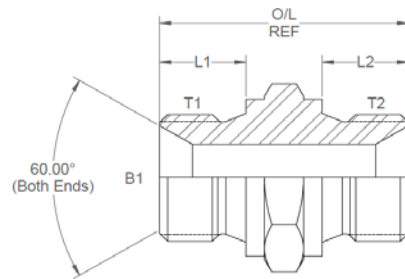
DESIGN DETAILS AND SPECIFICATIONS SUBJECT TO CHANGE WITHOUT PRIOR NOTICE - Whilst every effort has been made to ensure the accuracy of the information supplied herein, Burnett & Hillman cannot be held responsible for any errors or omissions (E&OE)

All dimensions are imperial unless stated.



	T1	T2	B1	B2	L1	L2	O/L	A/F
09933	3/4	1	0.659	0.875	0.63	0.709	1.925	41mm
09934	3/4	1-1/4	0.659	1.125	0.63	0.788	2.054	50mm
09935	3/4	1-1/2	0.659	1.312	0.63	0.866	2.182	55mm
09937	1	1	0.875		0.709	0.709	2.004	41mm
09938	1	1-1/4	0.875	1.125	0.709	0.788	2.133	50mm
09939	1	1-1/2	0.875	1.312	0.709	0.866	2.262	55mm
09941	1-1/4	1-1/4	1.125		0.788	0.788	2.212	50mm
09942	1-1/4	1-1/2	1.125	1.312	0.788	0.866	2.34	55mm
09944	1-1/4	2	1.125	1.812	0.788	0.945	2.489	70mm
09945	1-1/2	1-1/2	1.312		0.866	0.866	2.418	55mm
09947	1-1/2	2	1.312	1.812	0.866	0.945	2.567	70mm
09951	2	2	1.812		0.945	0.945	2.666	70mm

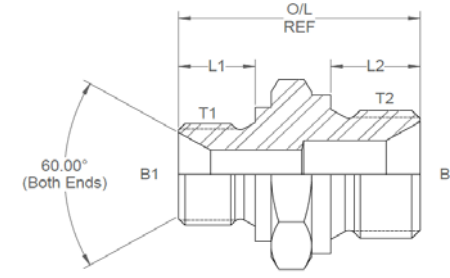
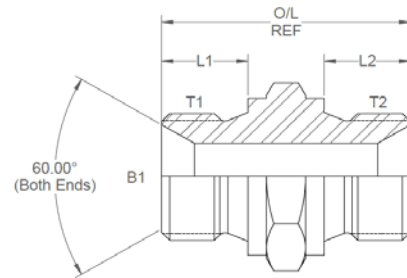
A/F dimensions are imperial unless stated.



	T1	T2	B1	B2	L1	L2	O/L	A/F
09900	1/8	1/8	0.137		8.00	8.00	23.95	14mm
09901	1/8	1/4	0.137	0.19	8.00	12.01	29.87	19mm
09902	1/8	3/8	0.137	0.31	8.00	12.01	30.35	22mm
09904	1/4	1/4	0.185		12.01	12.01	34.39	19mm
09906	1/4	3/8	0.185	0.31	12.01	12.01	34.87	22mm
09907	1/4	1/2	0.185	0.44	12.01	14.02	37.39	27mm
09909	1/4	3/4	0.19	0.66	12.01	16.00	40.89	32mm
09914	3/8	3/8	0.31		12.01	12.01	34.59	22mm
09915	3/8	1/2	0.31	0.44	12.01	14.02	37.87	27mm
09918	3/8	5/8	0.31	0.56	12.01	15.98	39.55	30mm
09916	3/8	3/4	0.31	0.66	12.01	16.00	41.40	32mm
09919	3/8	1-1/4	0.31	1.13	12.01	20.02	48.01	50mm
09920	3/8	1-1/2	0.38	1.44	12.01	22.00	51.56	55mm
09921	1/2	1/2	0.44		14.02	14.02	40.39	27mm
09922	1/2	5/8	0.44	0.56	14.02	16.00	43.94	30mm
09923	1/2	3/4	0.44	0.66	14.02	16.00	43.89	32mm
09924	1/2	1	0.44	0.88	14.02	18.01	47.37	41mm
09928	5/8	5/8	0.56		16.00	16.00	45.26	30mm
09929	5/8	3/4	0.56	0.66	16.00	16.00	45.57	32mm
09932	3/4	3/4	0.66		16.00	16.00	45.87	32mm

DESIGN DETAILS AND SPECIFICATIONS SUBJECT TO CHANGE WITHOUT PRIOR NOTICE - Whilst every effort has been made to ensure the accuracy of the information supplied herein, Burnett & Hillman cannot be held responsible for any errors or omissions (E&OE)

A/F dimensions are imperial unless stated.



	T1	T2	B1	B2	L1	L2	O/L	A/F
09933	3/4	1	16.74	22.23	16.00	18.01	48.90	41mm
09934	3/4	1-1/4	16.74	28.58	16.00	20.02	52.17	50mm
09935	3/4	1-1/2	16.74	33.32	16.00	22.00	55.42	55mm
09937	1	1	22.23		18.01	18.01	50.90	41mm
09938	1	1-1/4	22.23	28.58	18.01	20.02	54.18	50mm
09939	1	1-1/2	22.23	33.32	18.01	22.00	57.45	55mm
09941	1-1/4	1-1/4	28.58		20.02	20.02	56.18	50mm
09942	1-1/4	1-1/2	28.58	33.32	20.02	22.00	59.44	55mm
09944	1-1/4	2	28.58	46.02	20.02	24.00	63.22	70mm
09945	1-1/2	1-1/2	33.32		22.00	22.00	61.42	55mm
09947	1-1/2	2	33.32	46.02	22.00	24.00	65.20	70mm
09951	2	2	46.02		24.00	24.00	67.72	70mm